



MOTEUR BASSE TENSION



LSMotion

“La passion du monde de la Mécatronique”



M 4835 / M 5946

M 4835 / M 5946

Pag. 01



V 745

V 745

Pag. 14



M 35

M 35

Pag. 02



N 805 / N 806

N 805 / N 806

Pag. 15



M 7152 / M 7255

M 7152 / M 7255

Pag. 03



V 805

V 805

Pag. 16



N 505 / N 506

N 505 / N506

Pag. 04



N 88

N 88

Pag. 17



LN 56

LN 56

Pag. 05



V 88

V 88

Pag. 18



LV 56

LV 56

Pag. 06



ME IC01

ME IC01

Pag. 19



LN 70

LN 70

Pag. 07



Assemblaggio accessori

Accessories assembly

Pag. 20



M / MV

M / MV

Pag. 08



Caratteristiche accessori

Accessories features

Pag. 22



N 745 / N 746

N 745 / N 746

Pag. 13



LSMotion

INDUSTRIE

Motore M4835 IP54

Motor M4835 IP54

Motori C.C. a norme CEI ed IEC - magnete permanente - 2 poli
D.C. motors CEI and IEC standards - permanent magnet - 2 poles

Alimentazione da batteria - tensione nominale 12/24V
Battery supply - rated voltage 12/24V

Fattore di forma 1 - senza ventilazione
Form factor 1 - no ventilated

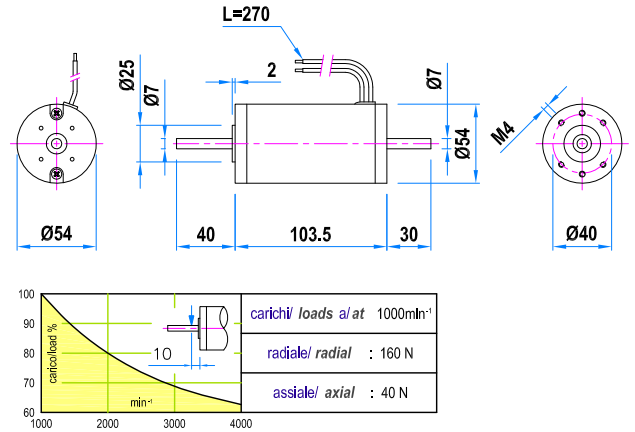
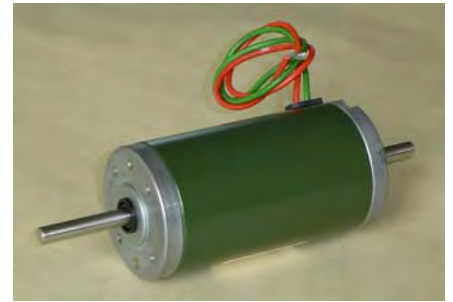
Isolamento classe F - protezione IP54
Insulation F class - protection IP54

Fili uscenti
Free wires

MOTORE / MOTOR	M4835 (12 V)		M4835 (24 V)	
Coppia nominale / Rated torque	0.16 Nm		0.16 Nm	
Potenza nominale / Rated power	25 W	35 W	50 W	65 W
Velocità nominale / Rated speed	1500 min ⁻¹	2000 min ⁻¹	3000 min ⁻¹	4000 min ⁻¹
Corrente nominale / Rated current	2.4 A	3.2 A	2.4 A	3.2 A
Tensione nominale / Rated voltage	12 V		24 V	
Velocità a vuoto / No load speed	1800 min ⁻¹	2400 min ⁻¹	3700 min ⁻¹	4800 min ⁻¹
Peso / Weight	0.9 Kg		0.9 Kg	
Tolleranza / Tolerance	±10%			

S2-S3 SERVIZIO INTERMITTENTE
INTERMITTENT DUTY

25-65W



Motore M5946 IP54

Motor M5946 IP54

Motori C.C. a norme CEI ed IEC - magnete permanente - 2 poli
D.C. motors CEI and IEC standards - permanent magnet - 2 poles

Alimentazione da batteria - tensione nominale 12/24V
Battery supply - rated voltage 12/24V

Fattore di forma 1 - senza ventilazione
Form factor 1 - no ventilated

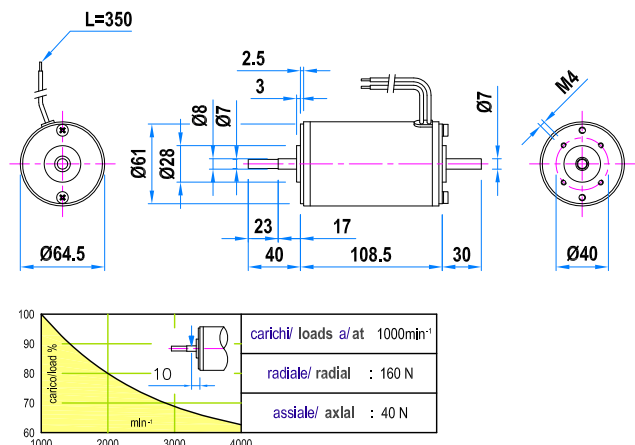
Isolamento classe F - protezione IP54
Insulation F class - protection IP54

Fili uscenti
Free wires

MOTORE / MOTOR	M5946 (12 V)		M5946 (24 V)	
Coppia nominale / Rated torque	0.28 Nm		0.28 Nm	
Potenza nominale / Rated power	45 W	60 W	90 W	115 W
Velocità nominale / Rated speed	1500 min ⁻¹	2000 min ⁻¹	3000 min ⁻¹	4000 min ⁻¹
Corrente nominale / Rated current	4.2 A	5.6 A	4.2 A	5.6 A
Tensione nominale / Rated voltage	12 V		24 V	
Velocità a vuoto / No load speed	1700 min ⁻¹	2300 min ⁻¹	3400 min ⁻¹	4500 min ⁻¹
Peso / Weight	1.4 Kg		1.4 Kg	
Tolleranza / Tolerance	±10%			

S2-S3 SERVIZIO INTERMITTENTE
INTERMITTENT DUTY

45-115W



Motore M35 IP54

Motor M35 IP54

S1 SERVIZIO CONTINUO
CONTINUOUS DUTY **20-100W**

Motori C.C. a norme CEI ed IEC - magnete permanente - 2 poli
D.C. motors CEI and IEC standards - permanent magnet - 2 poles

Alimentazione da batteria - tensione nominale 12/24/48V
Battery supply - rated voltage 12/24/48V

Fattore di forma 1 - senza ventilazione
Form factor 1 - no ventilated

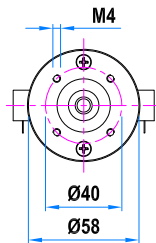
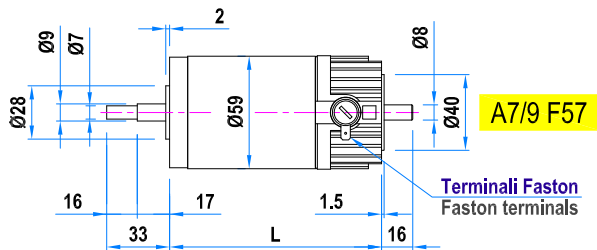
Protezione IP54 - isolamento classe F / H
Protection IP54 - insulation F / H class

Terminali Faston
Faston terminals

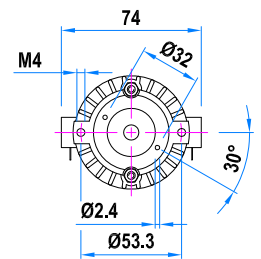


Tipo / Type	1500min ⁻¹			2000min ⁻¹			3000min ⁻¹		
M35.3	20 W	12 V - 2.4 A	0.13 Nm	27 W	12 V - 3.6 A	0.13 Nm	40 W	12 V - 4.8 A	0.13 Nm
		24 V - 1.2 A			24 V - 1.8 A			24 V - 2.4 A	
		48 V - 0.6 A			48 V - 0.9 A			48 V - 1.2 A	
M35.4	28 W	12 V - 3.3 A	0.18 Nm	37 W	12 V - 5 A	0.18 Nm	55 W	12 V - 6.6 A	0.18 Nm
		24 V - 1.7 A			24 V - 2.5 A			24 V - 3.3 A	
		48 V - 0.8 A			48 V - 1.2 A			48 V - 1.6 A	
M35.6	38 W	12 V - 4.5 A	0.24 Nm	50 W	12 V - 6.8 A	0.24 Nm	75 W	12 V - 9 A	0.24 Nm
		24 V - 2.2 A			24 V - 3.4 A			24 V - 4.5 A	
		48 V - 1.1 A			48 V - 1.7 A			48 V - 2.2 A	
M35.9	50 W	12 V - 6 A	0.32 Nm	67 W	12 V - 9 A	0.32 Nm	100 W	12 V - 12 A	0.32 Nm
		24 V - 3 A			24 V - 4.5 A			24 V - 6 A	
		48 V - 1.5 A			48 V - 2.2 A			48 V - 3 A	

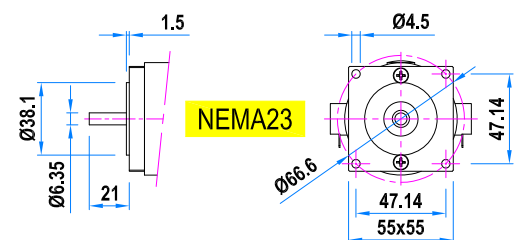
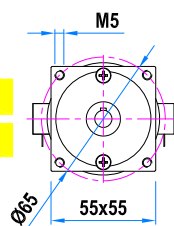
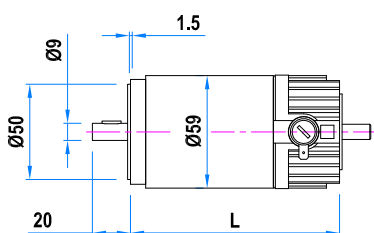
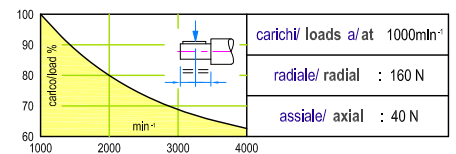
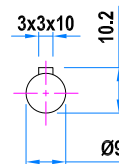
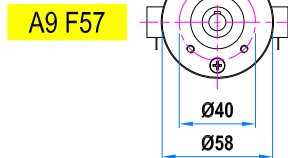
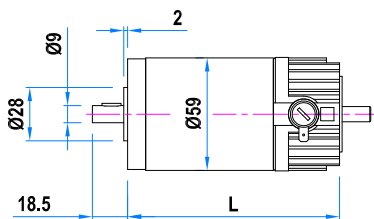
Tolleranza / Tolerance ±10%



Tipo / Type	L	Peso / Weight
M35.3	99.5	0.9 Kg
M35.4	112	1.2 Kg
M35.6	132	1.4 Kg
M35.9	163	1.9 Kg



Predisposizioni posteriori
Back shield pre arrangement



Motore M7152 IP54

Motor M7152 IP54

Motori C.C. a norme CEI ed IEC - magnete permanente - 2 poli
D.C. motors CEI and IEC standards - permanent magnet - 2 poles

Alimentazione da batteria - tensione nominale 12/24V
Battery supply - rated voltage 12/24V

Fattore di forma 1 - senza ventilazione
Form factor 1 - no ventilated

Isolamento classe F - protezione IP54
Insulation F class - protection IP54

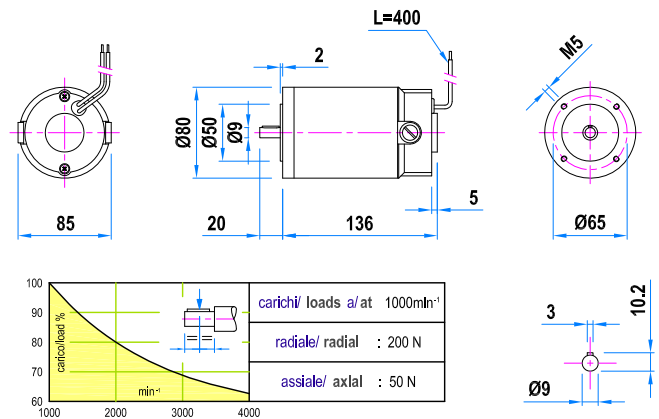
Fili uscenti
Free wires

S2-S3 SERVIZIO INTERMITTENTE
INTERMITTENT DUTY

80-165W



MOTORE / MOTOR	M7152 (12 V)		M7152 (24 V)
Coppia nominale / Rated torque	0.48 Nm		0.52 Nm
Potenza nominale / Rated power	80 W	150 W	165 W
Velocità nominale / Rated speed	1500 min ⁻¹	3000 min ⁻¹	3000 min ⁻¹
Corrente nominale / Rated current	8.5 A	17 A	8.5 A
Tensione nominale / Rated voltage	12 V		24 V
Velocità a vuoto / No load speed	1800 min ⁻¹	3700 min ⁻¹	3500 min ⁻¹
Peso / Weight	2.2 Kg		2.2 Kg
Tolleranza / Tolerance	±10%		



Motore M7255 IP54

Motor M7255 IP54

Motori C.C. a norme CEI ed IEC - magnete permanente - 4 poli
D.C. motors CEI and IEC standards - permanent magnet - 4 poles

Alimentazione da batteria - tensione nominale 12/24V
Battery supply - rated voltage 12/24V

Fattore di forma 1 - senza ventilazione
Form factor 1 - no ventilated

Isolamento classe F - protezione IP54
Insulation F class - protection IP54

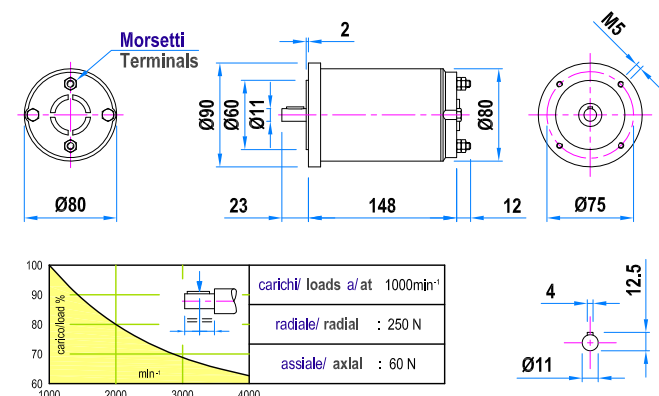
Morsetti
Terminals

S2-S3 SERVIZIO INTERMITTENTE
INTERMITTENT DUTY

120-345W



MOTORE / MOTOR	M7255.2	
Coppia nominale / Rated torque	1.1 Nm	
Potenza nominale / Rated power	175 W	345 W
Velocità nominale / Rated speed	1500 min ⁻¹	3000 min ⁻¹
Corrente nominale / Rated current	20 A	
Tensione nominale / Rated voltage	12 V	24 V
Velocità a vuoto / No load speed	1800 min ⁻¹	3600 min ⁻¹
Peso / Weight	2.9 Kg	
Tolleranza / Tolerance	±10%	



Motore N505 IP54 - N506 IP66

Motor N505 IP54 - N506 IP66

60-470W

Motori C.C. a norme CEI ed IEC - magnete permanente - 4 poli
D.C. motors CEI and IEC standards - permanent magnet - 4 poles

Alimentazione da batteria - tensione nominale 12/24/48V
Battery supply - rated voltage 12/24/48V

Fattore di forma 1 - servizio S1 e S3 - senza ventilazione
Form factor 1 - duty S1 and S3 - no ventilated

Protezione IP54 su N505, IP66 su N506 - isolamento classe F / H
Protection IP54 on N505, IP66 on N506- insulation F / H class

Scatola morsetti
Terminal box



Servizio intermittente S3 / Intermittent duty S3

Tipo / Type	1500min ⁻¹			2000min ⁻¹			3000min ⁻¹		
N505.4 N506.4	80 W	12 V - 8.5 A	0.53 Nm	120 W	12 V - 12.8 A	0.53 Nm	165 W	12 V - 17.6 A	0.53 Nm
		24 V - 4.3 A			24 V - 6.4 A			24 V - 8.8 A	
		48 V - 2.1 A			48 V - 3.2 A			48 V - 4.4 A	
N505.5 N506.5	115 W	12 V - 12.3 A	0.75 Nm	175 W	12 V - 18.7 A	0.75 Nm	235 W	12 V - 25.1 A	0.75 Nm
		24 V - 6.1 A			24 V - 9.3 A			24 V - 12.5 A	
		48 V - 3.1 A			48 V - 4.7 A			48 V - 6.3 A	
N505.10 N506.10	235 W	12 V - 25.1 A	1.5 Nm	310 W	12 V - 33 A	1.5 Nm	400 W	12 V - 42.7 A	1.27 Nm
		24 V - 12.5 A			24 V - 16.5 A			24 V - 25.1 A	
		48 V - 6.3 A			48 V - 8.3 A			48 V - 12.5 A	

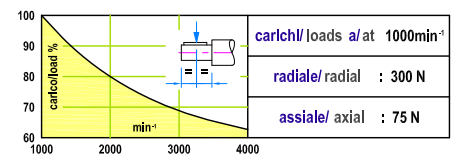
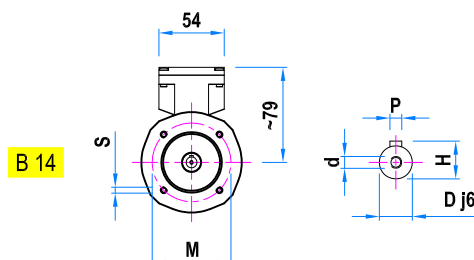
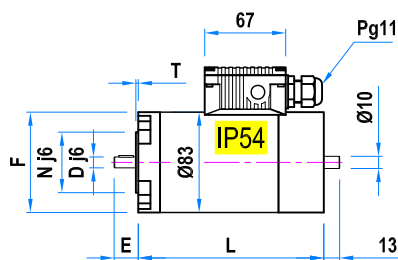
Tolleranza / Tolerance ±10%

Max. 400 W a / at 12 V

Servizio continuo S1 / Continuous duty S1

Tipo / Type	1500min ⁻¹			2000min ⁻¹			3000min ⁻¹		
N505.4 N506.4	60 W	12 V - 6.4 A	0.39 Nm	80 W	12 V - 8.5 A	0.39 Nm	120 W	12 V - 12.8 A	0.39 Nm
		24 V - 3.2 A			24 V - 4.3 A			24 V - 6.4 A	
		48 V - 1.6 A			48 V - 2.1 A			48 V - 3.2 A	
N505.5 N506.5	85 W	12 V - 9.1 A	0.55 Nm	115 W	12 V - 12.3 A	0.55 Nm	170 W	12 V - 18.2 A	0.55 Nm
		24 V - 4.5 A			24 V - 6.1 A			24 V - 9.1 A	
		48 V - 2.3 A			48 V - 3.1 A			48 V - 4.5 A	
N505.10 N506.10	170 W	12 V - 18.2 A	1.1 Nm	230 W	12 V - 24.6 A	1.1 Nm	340 W	12 V - 36.4 A	1.1 Nm
		24 V - 9.1 A			24 V - 12.3 A			24 V - 18.2 A	
		48 V - 4.5 A			48 V - 6.1 A			48 V - 9.1 A	

Tolleranza / Tolerance ±10%



Tipo / Type	L	Peso / Weight
N505.4 N506.4	138.5	2.4 Kg
N505.5 N506.5	153.5	2.7 Kg
N505.10 N506.10	200.5	4.3 Kg

Alberi / Shafts

D	E	P	H	d
Ø9	20	3x3x12	10.2	M3
Ø11	23	4x4x15	12.5	M4

Flange B14 / Flanges B14

F	N	M	T	S
Ø80	Ø50	Ø65	2	M5
Ø90	Ø60	Ø75	2	M5

Motore LN56 IP54

Motor LN56 IP54

S1 SERVIZIO CONTINUO
CONTINUOUS DUTY **85-500W**

Motori C.C. a norme CEI ed IEC - magnete permanente - 2 poli
D.C. motors CEI and IEC standards - permanent magnet - 2 poles

Alimentazione da batteria - tensione nominale 12/24/48V
Battery supply - rated voltage 12/24/48V

Fattore di forma 1 - senza ventilazione
Form factor 1 - no ventilated

Protezione IP54 - isolamento classe F / H
Protection IP54 - insulation F / H class

Scatola morsetti o uscita cavo
Terminal box or free cable

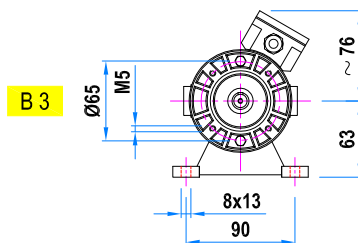
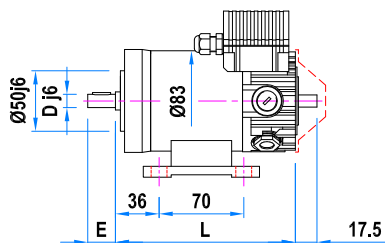
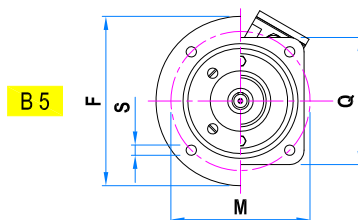
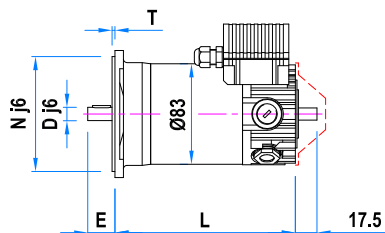
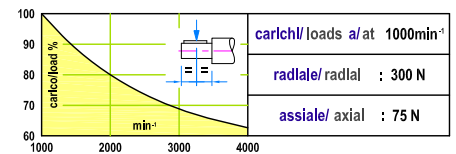
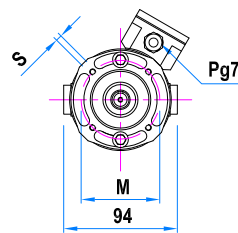
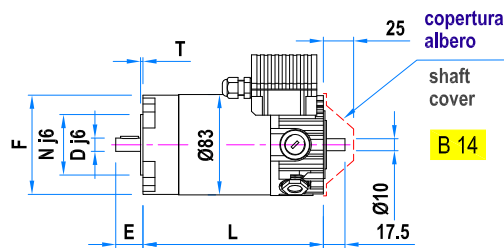


Tipo / Type	1500min ⁻¹			2000min ⁻¹			3000min ⁻¹		
LN56.5	85 W	12 V - 9.1 A	0.53 Nm	110 W	12 V - 11.8 A	0.53 Nm	165 W	12 V - 17.6 A	0.53 Nm
		24 V - 4.5 A			24 V - 5.9 A			24 V - 8.8 A	
		48 V - 2.3 A			48 V - 2.9 A			48 V - 4.4 A	
LN56.10	165 W	12 V - 17.6 A	1 Nm	200 W	12 V - 22 A	0.95 Nm	200 W	12 V - 22 A	0.64 Nm
		24 V - 8.8 A		220 W	24 V - 11.8 A		330 W	24 V - 17.6 A	
		48 V - 4.4 A		48 V - 5.9 A	48 V - 8.8 A		1 Nm		
LN56.15	200 W	12 V - 22 A	1.3 Nm	--	--	--	--	--	--
	250 W	24 V - 13.5 A	1.6 Nm	330 W	24 V - 17.6 A	1.6 Nm	400 W	24 V - 22 A	1.3 Nm
		48 V - 6.7 A			48 V - 8.8 A		500 W	48 V - 13.5 A	1.6 Nm

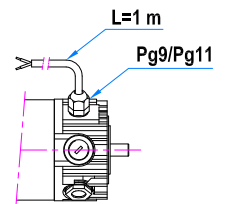
Tolleranza / Tolerance ±10%

Max. 200 W a / at 12 V

Max. 400 W a / at 24 V



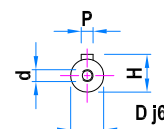
Tipo / Type	L	Peso / Weight
LN56.5	149	2.7 Kg
LN56.10	196	4.3 Kg
LN56.15	241	5.6 Kg



Uscita cavo / Free cable

Flange B14 / Flanges B14				
F	N	M	T	S
Ø80	Ø50	Ø65	2	M5
Ø90	Ø60	Ø75	2	M5
Ø105	Ø70	Ø85	2	M6

Flange B5 / Flanges B5					
F	Q	N	M	T	S
Ø120	90	Ø80	Ø100	3	Ø6.5
--	105	Ø95	Ø115	2.5	Ø9
--	120	Ø110	Ø130	2.5	Ø9



Alberi / Shafts				
D	E	P	H	d
Ø9	20	3x3x12	10.2	M3
Ø11	23	4x4x15	12.5	M4
Ø14	30	5x5x20	16	M5

Motore LV56 IP54

Motor LV56 IP54

S1 SERVIZIO CONTINUO
CONTINUOUS DUTY

100-600W

Motori C.C. a norme CEI ed IEC - magnete permanente - 2 poli
D.C. motors CEI and IEC standards - permanent magnet - 2 poles

Alimentazione da batteria - tensione nominale 12/24/48V
Battery supply - rated voltage 12/24/48V

Fattore di forma 1 - autoventilato
Form factor 1 - selfventilated

Protezione IP54 - isolamento classe F / H
Protection IP54 - insulation F / H class

Scatola morsetti o uscita cavo
Terminal box or free cable

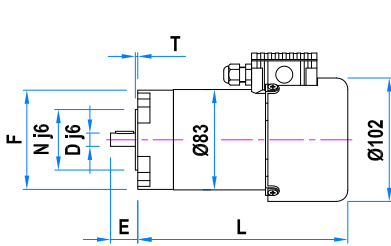


Tipo / Type	1500min ⁻¹			2000min ⁻¹			3000min ⁻¹						
LV56.5	100 W	12 V - 11 A	0.64 Nm	135 W	12 V - 14.5 A	0.64 Nm	200 W	12 V - 22 A	0.64 Nm				
		24 V - 5.5 A			24 V - 7.2 A			24 V - 11 A					
		48 V - 2.7 A			48 V - 3.6 A			48 V - 5.5 A					
LV56.10	200 W	12 V - 22 A	1.3 Nm	200 W	12 V - 22 A	0.95 Nm	200 W	12 V - 22 A	0.64 Nm				
		24 V - 11 A			24 V - 14.5 A			24 V - 22 A					
		48 V - 5.5 A			48 V - 7.2 A			48 V - 11 A					
LV56.15	200 W	12 V - 22 A	1.3 Nm	--	--	--	--	--	--				
		24 V - 16 A								24 V - 22 A	400 W	24 V - 22 A	1.3 Nm
		48 V - 8 A								48 V - 11 A	400 W	48 V - 16 A	1.9 Nm

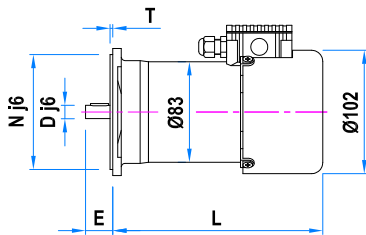
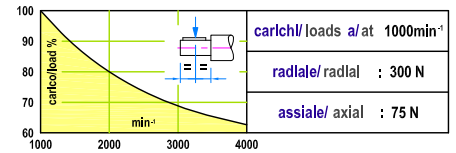
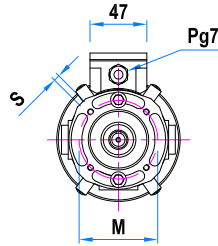
Tolleranza / Tolerance ±10%

Max. 200 W a / at 12 V

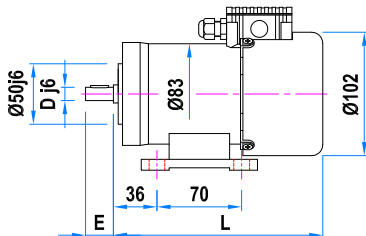
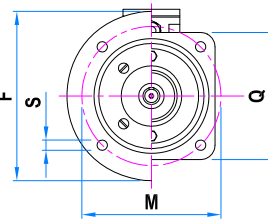
Max. 400 W a / at 24 V



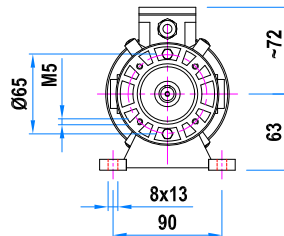
B 14



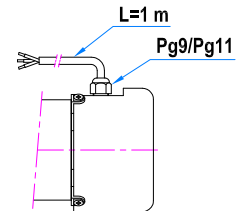
B 5



B 3



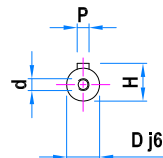
Tipo / Type	L	Peso / Weight
LV56.5	174	3.2 Kg
LV56.10	221	4.8 Kg
LV56.15	266	6.1 Kg



Uscita cavo / Free cable

Flange B14 / Flanges B14				
F	N	M	T	S
Ø80	Ø50	Ø65	2	M5
Ø90	Ø60	Ø75	2	M5
Ø105	Ø70	Ø85	2	M6

Flange B5 / Flanges B5					
F	Q	N	M	T	S
Ø120	90	Ø80	Ø100	3	Ø6.5
--	105	Ø95	Ø115	2.5	Ø9
--	120	Ø110	Ø130	2.5	Ø9



Alberi / Shafts				
D	E	P	H	d
Ø9	20	3x3x12	10.2	M3
Ø11	23	4x4x15	12.5	M4
Ø14	30	5x5x20	16	M5

Motore LN70 IP54 o IP66

Motor LN70 IP54 or IP66

S1 SERVIZIO CONTINUO / CONTINUOUS DUTY **160-760W**

Motori C.C. a norme CEI ed IEC - magnete permanente - 4 poli
D.C. motors CEI and IEC standards - permanent magnet - 4 poles

Alimentazione da batteria - tensione nominale 12/24/48V
Battery supply - rated voltage 12/24/48V

Fattore di forma 1 - senza ventilazione
Form factor 1 - no ventilated

Isolamento classe F / H - protezione IP54 (a richiesta IP66)
Insulation F / H class - protection IP54 (IP66 on request)

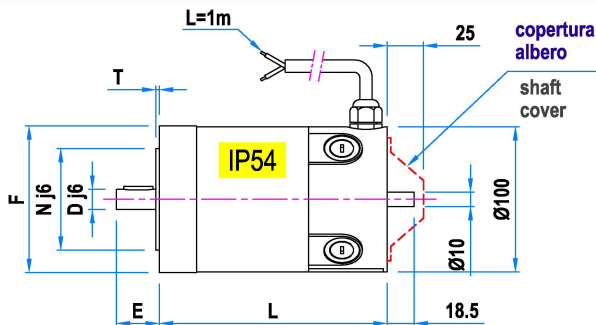
Uscita cavo
Free cable



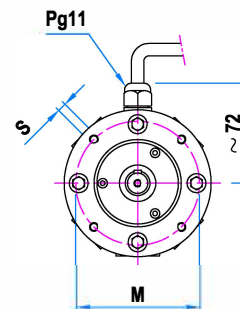
Tipo / Type	1500min ⁻¹			2000min ⁻¹			3000min ⁻¹		
LN70.5	160 W	12 V - 17 A	1 Nm	215 W	12 V - 22 A	1 Nm	320 W	12 V - 34 A	1 Nm
		24 V - 8.5 A			24 V - 11 A			24 V - 17 A	
		48 V - 4.2 A			48 V - 5.5 A			48 V - 8.5 A	
LN70.10	270 W	12 V - 28 A	1.7 Nm	360 W	12 V - 38 A	1.7 Nm	400 W	12 V - 41 A	1.2 Nm
		24 V - 14 A			24 V - 19 A		540 W	24 V - 28 A	1.7 Nm
		48 V - 7 A			48 V - 9.5 A		48 V - 14 A		
LN70.15	380 W	12 V - 40 A	2.4 Nm	380 W	12 V - 40 A	1.8 Nm	--	--	--
		24 V - 20 A		500 W	24 V - 26 A		760 W	24 V - 40 A	2.4 Nm
		48 V - 10 A		48 V - 13 A	48 V - 20 A				

Tolleranza / Tolerance ±10%

Max. 400 W a / at 12 V

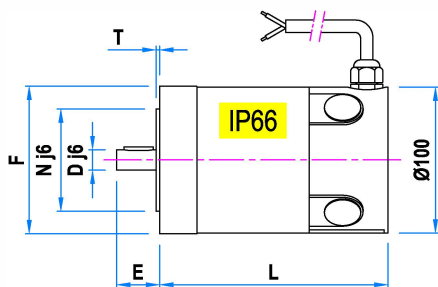


B 14

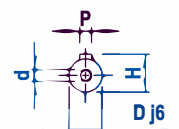
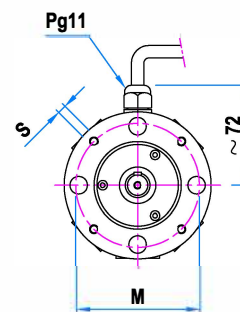


Flange B14 / Flanges B14

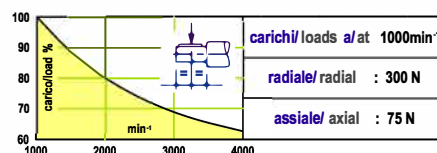
F	N	M	T	S
Ø90	Ø60	Ø75	2	M5
Ø105	Ø70	Ø85	2.5	M6



B 14



Tipo / Type	L	Peso / Weight
LN70.5	156.5	4.2 Kg
LN70.10	206.5	6.2 Kg
LN70.15	256.5	8.3 Kg



Alberi / Shafts				
D	E	P	H	d
Ø11	23	4x4x15	12.5	M4
Ø14	30	5x5x20	16	M5



LSMotion
INDUSTRIE

"La passion du monde de la Mécatronique"

Specifiche soggette a modifiche senza preavviso
Specifications subject to change without notice

pag.07

Motore M71_3 IP54

Motor M71_3 IP54

Motore MV71_3 IP23

Motor MV71_3 IP23

180-360W

Motori C.C. a norme CEI ed IEC - magnete permanente - 2 o 4 poli
D.C. motors CEI and IEC standards - permanent magnet - 2 or 4 poles

Alimentazione da batteria - tensione nominale 12/24/48V - fattore di forma 1
Battery supply - rated voltage 12/24/48V - form factor 1

Tipo M senza ventilazione - servizio intermittente S2/S3 - prot. IP54 - isol. cl. F/H
M type no ventilated - intermittent duty S2/S3 - protection IP54 - insul. F/H class

Tipo MV autoventilato - servizio continuo S1 - prot. IP23 - isol. classe F/H
MV type selfventilated - continuous duty S1 - protection IP23 - insul. F/H class

Fili uscenti
Free wires



Tipo M senza ventilazione - Servizio intermittente S2/S3

M type no ventilated - Intermittent duty S2/S3

Tipo / Type	1500min ⁻¹			2000min ⁻¹			3000min ⁻¹		
M71_3	180 W	12 V - 19 A	1.15 Nm	240 W	12 V - 26 A	1.15 Nm	360 W	12 V - 38 A	
		24 V - 9 A			24 V - 12 A			24 V - 18 A	
		48 V - 4.5 A			48 V - 6 A			48 V - 9 A	

Tipo MV autoventilato - Servizio continuo S1

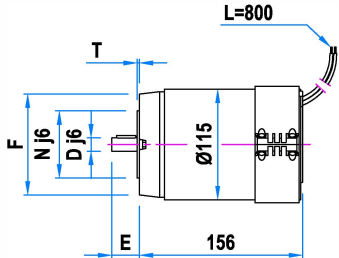
MV type no ventilated - Continuous duty S1

Tipo / Type	1500min ⁻¹			2000min ⁻¹			3000min ⁻¹		
MV71_3	180 W	12 V - 19 A	1.15 Nm	240 W	12 V - 26 A	1.15 Nm	360 W	12 V - 38 A	
		24 V - 9 A			24 V - 12 A			24 V - 18 A	
		48 V - 4.5 A			48 V - 6 A			48 V - 9 A	

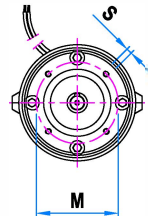
Tolleranza / Tolerance ±10%

Tipo / Type 712.3 2 poli / 2 poles

Tipo / Type 714.3 4 poli / 4 poles

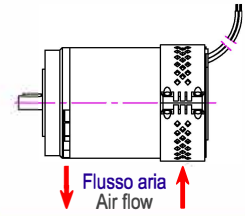


B 14

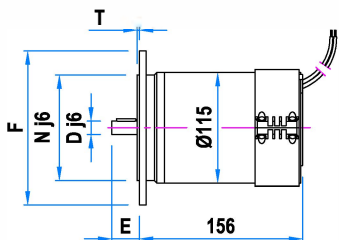


Flange B14 / Flanges B14

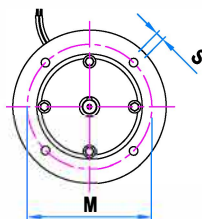
F	N	M	T	S
Ø90	Ø60	Ø75	2.5	M5
Ø105	Ø70	Ø85	2.5	M6



Tipo MV / MV type Autoventilato / Selfventilated



B 5

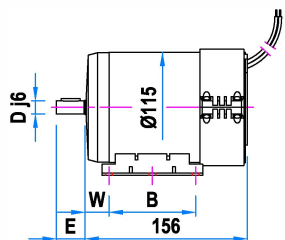


Flange B5 / Flanges B5

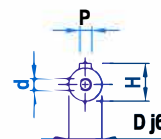
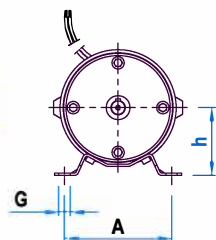
F	N	M	T	S
Ø140	Ø95	Ø115	2.5	Ø9
Ø160	Ø110	Ø130	2.5	Ø9

Piedi B3 / Feet B3

h	W	A	B	G
63	25	100	80	7x10
71	20	112	90	7x12



B 3

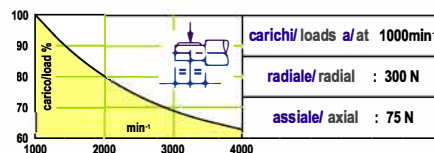


Alberi / Shafts

D	E	P	H	d
Ø11	23	4x4x15	12.5	M4
Ø14	30	5x5x20	16	M5

Peso / Weight

4.6 Kg



Motore M71_5 IP54

Motor M71_5 IP54

Motore MV71_5 IP23

Motor MV71_5 IP23

250-500W

Motori C.C. a norme CEI ed IEC - magnete permanente - 2 o 4 poli
 D.C. motors CEI and IEC standards - permanent magnet - 2 or 4 poles
 Alimentazione da batteria - tensione nominale 12/24/48V - fattore di forma 1
 Battery supply - rated voltage 12/24/48V - form factor 1

Tipo M senza ventilazione - servizio intermittente S2/S3 - prot. IP54 - isol. cl. F/H
 M type no ventilated - intermittent duty S2/S3 - protection IP54 - insul. F/H class

Tipo MV autoventilato - servizio continuo S1 - prot. IP23 - isol. classe F/H
 MV type selfventilated - continuous duty S1 - protection IP23 - insul. F/H class

Fili uscenti
 Free wires



Tipo M senza ventilazione - Servizio intermittente S2/S3

M type no ventilated - Intermittent duty S2/S3

Tipo / Type	1500min ⁻¹			2000min ⁻¹			3000min ⁻¹		
M71_5	250 W	12 V - 26 A	1.6 Nm	340 W	12 V - 36 A	1.6 Nm	400 W	12 V - 43 A	1.3 Nm
		24 V - 12 A			24 V - 17 A		500 W	24 V - 25 A	1.6 Nm
		48 V - 6 A			48 V - 8 A		48 V - 12 A		

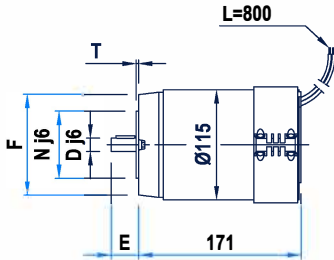
Tipo MV autoventilato - Servizio continuo S1

MV type no ventilated - Continuous duty S1

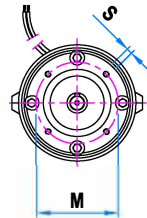
Tipo / Type	1500min ⁻¹			2000min ⁻¹			3000min ⁻¹		
MV71_5	250 W	12 V - 26 A	1.6 Nm	340 W	12 V - 36 A	1.6 Nm	400 W	12 V - 43 A	1.3 Nm
		24 V - 12 A			24 V - 17 A		500 W	24 V - 25 A	1.6 Nm
		48 V - 6 A			48 V - 8 A		48 V - 12 A		

Tolleranza / Tolerance ±10% Max. 400 W a / at 12 V

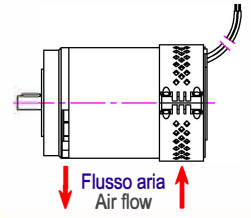
Tipo / Type 712.5 2 poli / 2 poles Tipo / Type 714.5 4 poli / 4 poles



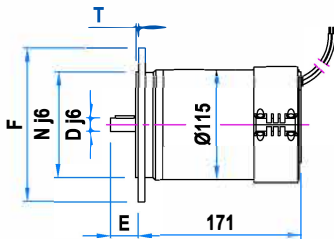
B 14



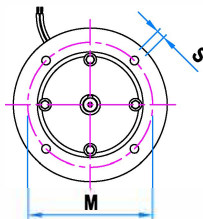
F	N	M	T	S
Ø90	Ø60	Ø75	2.5	M5
Ø105	Ø70	Ø85	2.5	M6



Tipo MV / MV type Autoventilato / Selfventilated

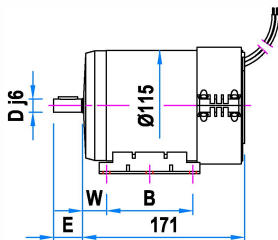


B 5

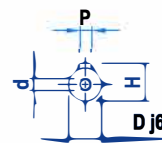
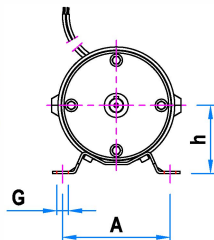


F	N	M	T	S
Ø140	Ø95	Ø115	2.5	Ø9
Ø160	Ø110	Ø130	2.5	Ø9

h	W	A	B	G
63	40	100	80	7x10
71	25	112	90	7x12

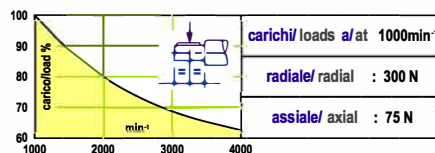


B 3



D	E	P	H	d
Ø11	23	4x4x15	12.5	M4
Ø14	30	5x5x20	16	M5

Peso / Weight
 5.7 Kg



Motore M71_7 IP54

Motor M71_7 IP54

Motore MV71_7 IP23

Motor MV71_7 IP23

300-600W

Motori C.C. a norme CEI ed IEC - magnete permanente - 2 o 4 poli
D.C. motors CEI and IEC standards - permanent magnet - 2 or 4 poles

Alimentazione da batteria - tensione nominale 12/24/48V - fattore di forma 1
Battery supply - rated voltage 12/24/48V - form factor 1

Tipo M senza ventilazione - servizio intermittente S2/S3 - prot. IP54 - isol. cl. F/H
M type no ventilated - intermittent duty S2/S3 - protection IP54 - insul. F/H class

Tipo MV autoventilato - servizio continuo S1 - prot. IP23 - isol. classe F/H
MV type selfventilated - continuous duty S1 - protection IP23 - insul. F/H class

Fili uscenti
Free wires



Tipo M senza ventilazione - Servizio intermittente S2/S3

M type no ventilated - Intermittent duty S2/S3

Tipo / Type	1500min ⁻¹			2000min ⁻¹			3000min ⁻¹		
M71_7	300 W	12 V - 31 A	1.9 Nm	400 W	12 V - 43 A	1.9 Nm	--	--	--
		24 V - 15 A			24 V - 20 A		24 V - 30 A		
		48 V - 7.5 A			48 V - 10 A		48 V - 15 A		

Tipo MV autoventilato - Servizio continuo S1

MV type no ventilated - Continuous duty S1

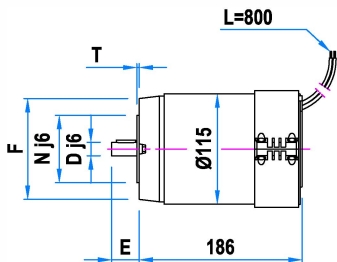
Tipo / Type	1500min ⁻¹			2000min ⁻¹			3000min ⁻¹		
MV71_7	300 W	12 V - 31 A	1.9 Nm	400 W	12 V - 43 A	1.9 Nm	--	--	--
		24 V - 15 A			24 V - 20 A		24 V - 30 A		
		48 V - 7.5 A			48 V - 10 A		48 V - 15 A		

Tolleranza / Tolerance ±10%

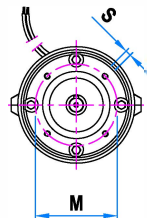
Max. 400 W a / at 12 V

Tipo / Type 712.7 2 poli / 2 poles

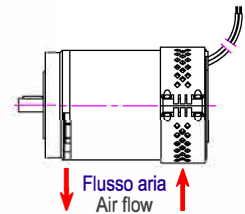
Tipo / Type 714.7 4 poli / 4 poles



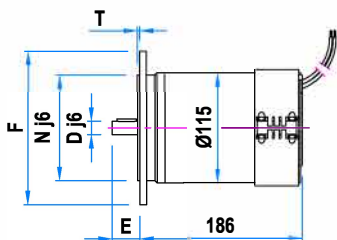
B 14



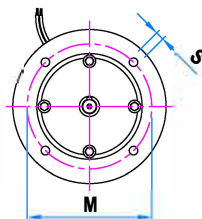
Flange B14 / Flanges B14				
F	N	M	T	S
Ø90	Ø60	Ø75	2.5	M5
Ø105	Ø70	Ø85	2.5	M6



Tipo MV / MV type
Autoventilato / Selfventilated

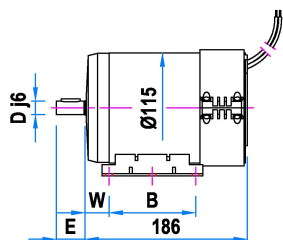


B 5

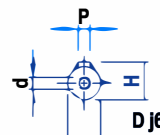
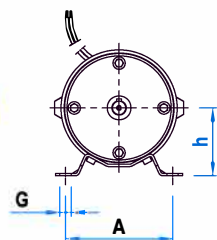


Flange B5 / Flanges B5				
F	N	M	T	S
Ø140	Ø95	Ø115	2.5	Ø9
Ø160	Ø110	Ø130	2.5	Ø9

Piedi B3 / Feet B3				
h	W	A	B	G
63	40	100	80	7x10
71	45	112	90	7x12



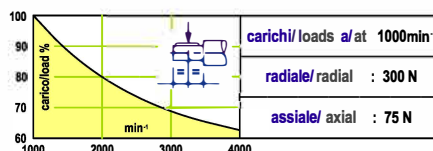
B 3



Alberi / Shafts				
D	E	P	H	d
Ø11	23	4x4x15	12.5	M4
Ø14	30	5x5x20	16	M5

Peso / Weight

6.5 Kg



Motore M71_9 IP54

Motor M71_9 IP54

Motore MV71_9 IP23

Motor MV71_9 IP23

400-850W

Motori C.C. a norme CEI ed IEC - magnete permanente - 2 o 4 poli
 D.C. motors CEI and IEC standards - permanent magnet - 2 or 4 poles
 Alimentazione da batteria - tensione nominale 12/24/48V - fattore di forma 1
 Battery supply - rated voltage 12/24/48V - form factor 1

Tipo M senza ventilazione - servizio intermittente S2/S3 - prot. IP54 - isol. cl. F/H
 M type no ventilated - intermittent duty S2/S3 - protection IP54 - insul. F/H class

Tipo MV autoventilato - servizio continuo S1 - prot. IP23 - isol. classe F/H
 MV type selfventilated - continuous duty S1 - protection IP23 - insul. F/H class

Fili uscenti
 Free wires



Tipo M senza ventilazione - Servizio intermittente S2/S3

M type no ventilated - Intermittent duty S2/S3

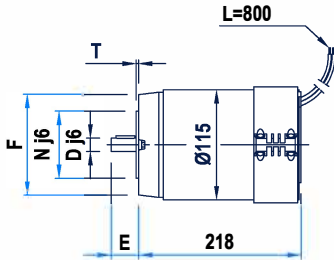
Tipo / Type	1500min ⁻¹			2000min ⁻¹			3000min ⁻¹		
M71_9	400 W	12 V - 43 A	2.6 Nm	--	--	--	--	--	--
	450 W	24 V - 23 A	2.9 Nm	600 W	24 V - 30 A	2.9 Nm	850 W	24 V - 43 A	2.7 Nm
		48 V - 11 A			48 V - 22 A				

Tipo MV autoventilato - Servizio continuo S1

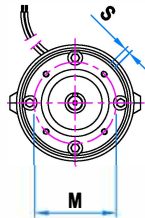
MV type no ventilated - Continuous duty S1

Tipo / Type	1500min ⁻¹			2000min ⁻¹			3000min ⁻¹		
MV71_9	400 W	12 V - 43 A	2.6 Nm	--	--	--	--	--	--
	450 W	24 V - 23 A	2.9 Nm	600 W	24 V - 30 A	2.9 Nm	850 W	24 V - 43 A	2.7 Nm
		48 V - 11 A			48 V - 22 A				

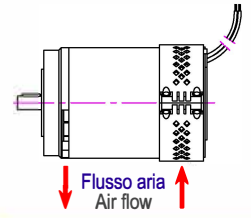
Tolleranza / Tolerance ±10% Max. 400 W a / at 12 V Tipo / Type 712.9 2 poli / 2 poles Tipo / Type 714.9 4 poli / 4 poles



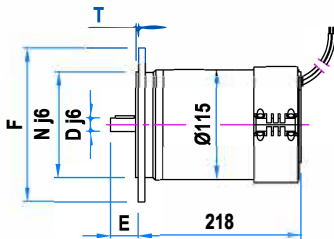
B 14



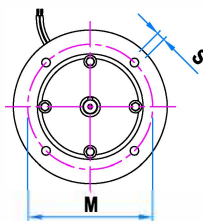
F	N	M	T	S
Ø90	Ø60	Ø75	2.5	M5
Ø105	Ø70	Ø85	2.5	M6



Tipo MV / MV type Autoventilato / Selfventilated

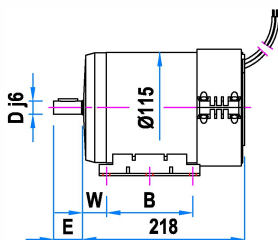


B 5

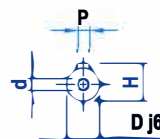
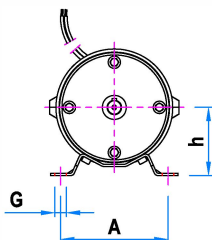


F	N	M	T	S
Ø140	Ø95	Ø115	2.5	Ø9
Ø160	Ø110	Ø130	2.5	Ø9

h	W	A	B	G
63	40	100	80	7x10
71	45	112	90	7x12

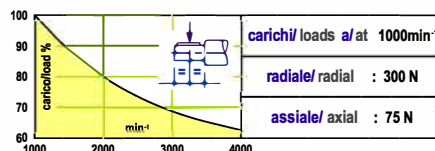


B 3



D	E	P	H	d
Ø11	23	4x4x15	12.5	M4
Ø14	30	5x5x20	16	M5

Peso / Weight
 8.5 Kg



Motore M71_.13 IP54

Motor M71_.13 IP54

Motore MV71_.13 IP23

Motor MV71_.13 IP23

600-1200W

Motori C.C. a norme CEI ed IEC - magnete permanente - 2 o 4 poli
D.C. motors CEI and IEC standards - permanent magnet - 2 or 4 poles

Alimentazione da batteria - tensione nominale 12/24/48V - fattore di forma 1
Battery supply - rated voltage 12/24/48V - form factor 1

Tipo M senza ventilazione - servizio intermittente S2/S3 - prot. IP54 - isol. cl. F/H
M type no ventilated - intermittent duty S2/S3 - protection IP54 - insul. F/H class

Tipo MV autoventilato - servizio continuo S1 - prot. IP23 - isol. classe F/H
MV type selfventilated - continuous duty S1 - protection IP23 - insul. F/H class

Fili uscenti
Free wires



Tipo M senza ventilazione - Servizio intermittente S2/S3

M type no ventilated - Intermittent duty S2/S3

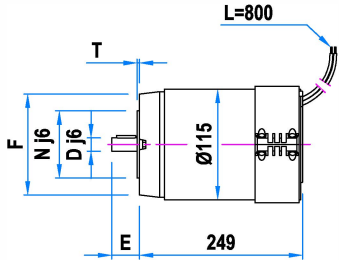
Tipo / Type	1500min ⁻¹			2000min ⁻¹			3000min ⁻¹		
M71_.13	--	--	--	--	--	--	--	--	--
	600 W	24 V - 30 A	3.8 Nm	800 W	24 V - 40 A	3.8 Nm	--	--	--
		48 V - 15 A			1200 W		48 V - 30 A	3.8 Nm	

Tipo MV autoventilato - Servizio continuo S1

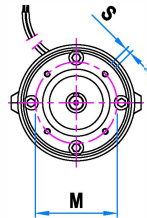
MV type no ventilated - Continuous duty S1

Tipo / Type	1500min ⁻¹			2000min ⁻¹			3000min ⁻¹		
MV71_.13	--	--	--	--	--	--	--	--	--
	600 W	24 V - 30 A	3.8 Nm	800 W	24 V - 40 A	3.8 Nm	--	--	--
		48 V - 15 A			1200 W		48 V - 30 A	3.8 Nm	

Tolleranza / Tolerance ±10% Max. 400 W a / at 12 V Max. 800 W a / at 24 V Tipo / Type 712.13 2 poli / 2 poles Tipo / Type 714.13 4 poli / 4 poles

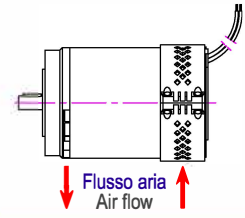


B 14

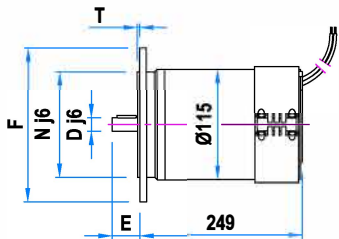


Flange B14 / Flanges B14

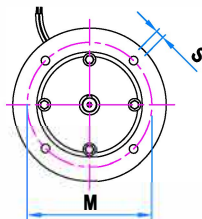
F	N	M	T	S
Ø90	Ø60	Ø75	2.5	M5
Ø105	Ø70	Ø85	2.5	M6



Tipo MV / MV type
Autoventilato / Selfventilated



B 5

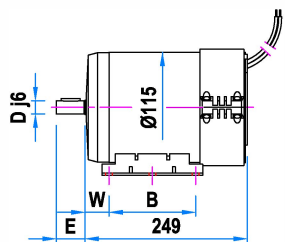


Flange B5 / Flanges B5

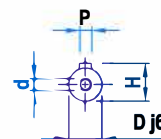
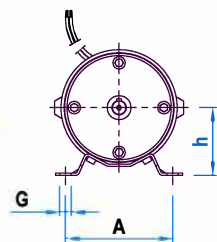
F	N	M	T	S
Ø140	Ø95	Ø115	2.5	Ø9
Ø160	Ø110	Ø130	2.5	Ø9

Piedi B3 / Feet B3

h	W	A	B	G
63	40	100	80	7x10
71	45	112	90	7x12



B 3

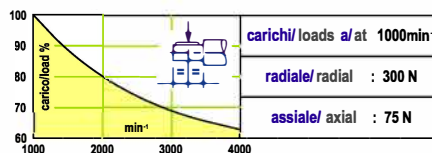


Alberi / Shafts

D	E	P	H	d
Ø11	23	4x4x15	12.5	M4
Ø14	30	5x5x20	16	M5

Peso / Weight

11.5 Kg



Motore N745 IP55 - N746 IP66

Motor N745 IP55 - N746 IP66

S1 SERVIZIO CONTINUO
CONTINUOUS DUTY **0,3-1,3kW**

Motori C.C. a norme CEI ed IEC - magnete permanente - 4 poli
D.C. motors CEI and IEC standards - permanent magnet - 4 poles

Alimentazione da batteria - tensione nominale 12/24/48V
Battery supply - rated voltage 12/24/48V

Fattore di forma 1 - senza ventilazione
Form factor 1 - no ventilated

N745 protezione IP55 - N746 protezione IP66 - isolamento classe F / H
N745 protection IP55 - N746 protection IP66 - insulation F / H class

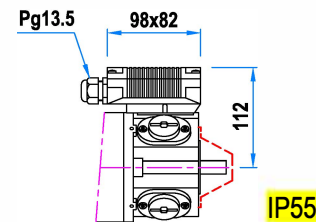
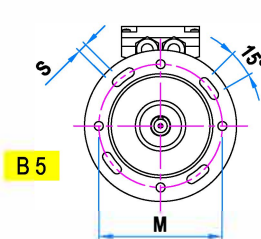
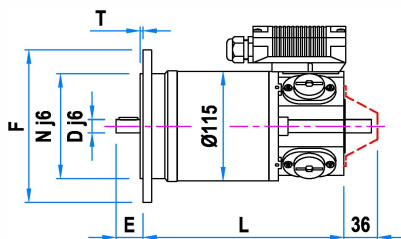
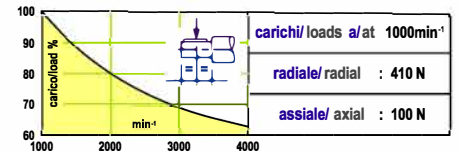
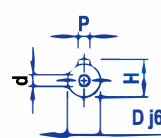
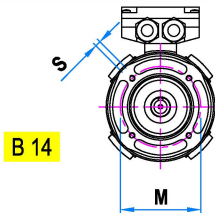
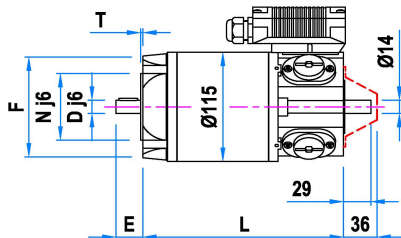
N745 scatola morsetti o uscita cavo - N746 solo uscita cavo senza albero posteriore
N745 terminal box or free cable - N746 only free cable without back shaft



Tipo / Type	1500min ⁻¹			2000min ⁻¹			3000min ⁻¹		
N745.6 N746.6	0,3 kW	12 V - 32 A	2 Nm	0,4 kW	12 V - 43 A	2 Nm	0,55 kW	12 V - 59 A	1,8 Nm
		24 V - 16 A			24 V - 21,5 A			24 V - 29,5 A	
		48 V - 8 A			48 V - 10,7 A			48 V - 14,7 A	
N745.9 N746.9	0,4 kW	12 V - 43 A	2,7 Nm	0,55 kW	12 V - 59 A	2,7 Nm	0,75 kW	12 V - 80 A	2,4 Nm
		24 V - 21,5 A			24 V - 29,5 A			24 V - 40 A	
		48 V - 10,7 A			48 V - 14,7 A			48 V - 20 A	
N745.12 N746.12	0,55 kW	12 V - 59 A	3,6 Nm	0,75 kW	12 V - 80 A	3,6 Nm	0,75 kW	12 V - 80 A	2,4 Nm
		24 V - 29,5 A			24 V - 40 A			24 V - 53,5 A	
		48 V - 14,7 A			48 V - 20 A		48 V - 26,7 A	3,2 Nm	
N745.18	0,75 kW	12 V - 80 A	4,8 Nm	0,75 kW	12 V - 80 A	3,6 Nm	--	--	--
N746.18	0,8 kW	24 V - 43 A	5,1 Nm	1,05 kW	24 V - 56 A	5,1 Nm	1,3 kW	24 V - 70 A	4,2 Nm
		48 V - 21,5 A			48 V - 28 A			48 V - 34,7 A	

Tolleranza / Tolerance ±10%

Max. 0,75 kW a / at 12 V Max. 1,3 kW a / at 24 V

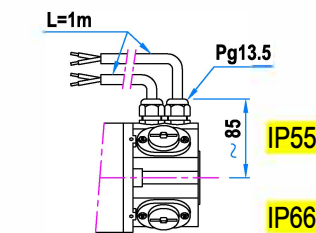
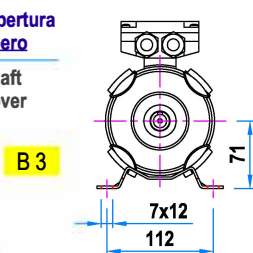
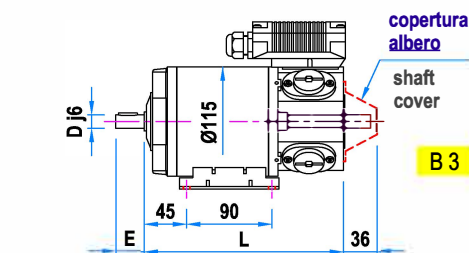


Morsettiera / Terminal box

Alberi / Shafts				
D	E	P	H	d
Ø14	30	5x5x20	16	M5
Ø19	40	6x6x30	21.5	M6

Flange B14 / Flanges B14				
F	N	M	T	S
Ø105	Ø70	Ø85	2.5	M6
Ø120	Ø80	Ø100	2.5	M6

Flange B5 / Flanges B5				
F	N	M	T	S
Ø160	Ø110	Ø130	3	Ø9.5
Ø200	Ø130	Ø165	3	Ø11



Uscita cavo / Free cable

Tipo / Type	L	Peso / Weight
N745.6 N746.6	214	7.7 Kg
N745.9 N746.9	247	9.7 Kg
N745.12 N746.12	277	11.7 Kg
N745.18 N746.18	337	15.7 Kg

Motore V745 IP55 - V746 IP66

Motor V745 IP55 - V746 IP66

S1 SERVIZIO CONTINUO
CONTINUOUS DUTY

0,4-1,8kW

Motori C.C. a norme CEI ed IEC - magnete permanente - 4 poli
D.C. motors CEI and IEC standards - permanent magnet - 4 poles

Alimentazione da batteria - tensione nominale 12/24/48V
Battery supply - rated voltage 12/24/48V

Fattore di forma 1 - senza ventilazione
Form factor 1 - no ventilated

V745 protezione IP55 - V746 protezione IP66 - isolamento classe F / H
V745 protection IP55 - V746 protection IP66 - insulation F / H class

V745 scatola morsetti o uscita cavo - V746 solo uscita cavo
V745 terminal box or free cable - V746 only free cable

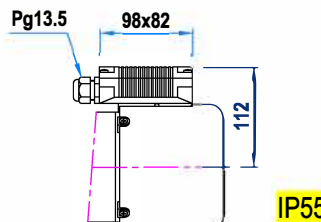
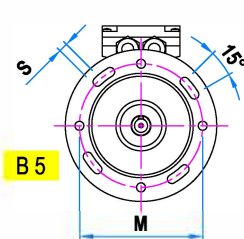
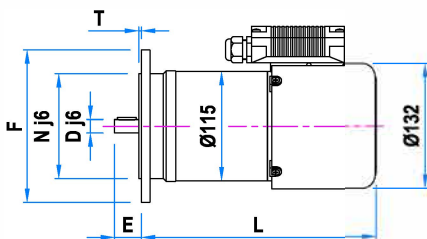
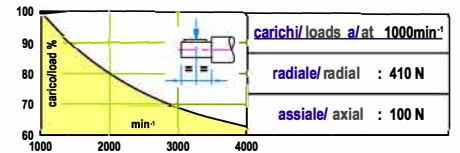
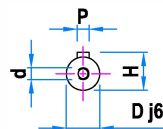
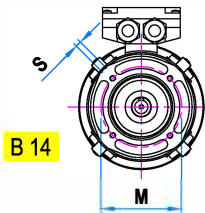
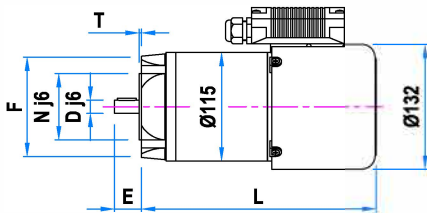


Tipo / Type	1500min ⁻¹			2000min ⁻¹			3000min ⁻¹		
V745.6	0,4 kW	12 V - 40 A	2,6 Nm	0,55 kW	12 V - 58 A	2,6 Nm	0,75 kW	12 V - 80 A	2,3 Nm
V746.6		24 V - 20 A			24 V - 29 A			24 V - 40 A	
		48 V - 10 A			48 V - 14,5 A			48 V - 20 A	
V745.9	0,55 kW	12 V - 58 A	3,5 Nm	0,75 kW	12 V - 80 A	3,5 Nm	1 kW	12 V - 80 A	2,3 Nm
V746.9		24 V - 29 A			24 V - 40 A			24 V - 53,5 A	
		48 V - 14,5 A			48 V - 20 A			48 V - 26,5 A	
V745.12	0,75 kW	12 V - 80 A	4,8 Nm	0,75 kW	12 V - 80 A	3,5 Nm	--	--	--
V746.12		24 V - 40 A		1 kW	24 V - 53,5 A	4,8 Nm	1,3 kW	24 V - 70 A	4,2 Nm
		48 V - 20 A		--	48 V - 26,5 A	--	48 V - 35 A	--	
V745.18	0,75 kW	12 V - 80 A	4,8 Nm	--	--	--	--	--	--
V746.18	1 kW	24 V - 53,5 A	6,4 Nm	1,3 kW	24 V - 70 A	6,4 Nm	1,5 kW	24 V - 80 A	4,8 Nm
		48 V - 26,5 A			48 V - 35 A		1,8 kW	48 V - 48 A	5,7 Nm

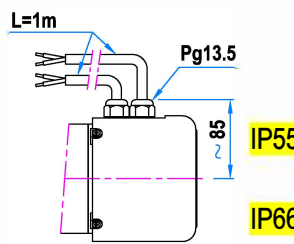
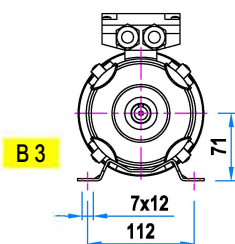
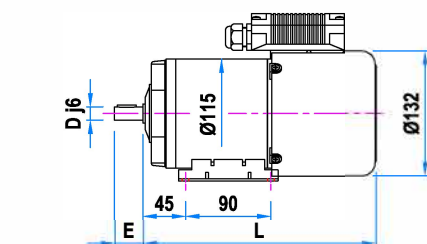
Tolleranza / Tolerance ±10%

Max. 0,75 kW a / at 12 V

Max. 1,5 kW a / at 24 V



Morsettiera / Terminal box



Uscita cavo / Free cable

Alberi / Shafts

D	E	P	H	d
Ø14	30	5x5x20	16	M5
Ø19	40	6x6x30	21.5	M6

Flange B14 / Flanges B14

F	N	M	T	S
Ø105	Ø70	Ø85	2.5	M6
Ø120	Ø80	Ø100	2.5	M6

Flange B5 / Flanges B5

F	N	M	T	S
Ø160	Ø110	Ø130	3	Ø9.5
Ø200	Ø130	Ø165	3	Ø11

Tipo / Type	L	Peso / Weight
V745.6 V746.6	248	8 Kg
V745.9 V746.9	281	10 Kg
V745.12 V746.12	311	12 Kg
V745.18 V746.18	371	16 Kg

Motore N805 IP55 - N806 IP66

Motor N805 IP55 - N806 IP66

S2-S3 SERVIZIO INTERMITTENTE
INTERMITTENT DUTY **0,55-2,2kW**

Motori C.C. a norme CEI ed IEC - magnete permanente - 4 poli
D.C. motors CEI and IEC standards - permanent magnet - 4 poles

Alimentazione da batteria - tensione nominale 12/24/48V
Battery supply - rated voltage 12/24/48V

Fattore di forma 1 - isolamento classe F / H - senza ventilazione
Form factor 1 - insulation F / H class - without ventilation

N805 protezione IP55 - N806 protezione IP66
N805 protection IP55 - N806 protection IP66

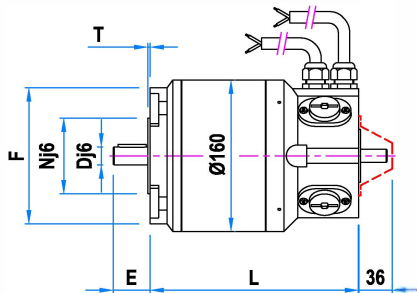
N805 uscita cavi o scatola morsetti - N806 solo uscita cavi senza albero posteriore
N805 free cables or terminal box - N806 only free cables without back shaft



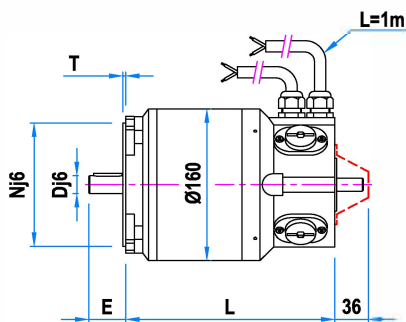
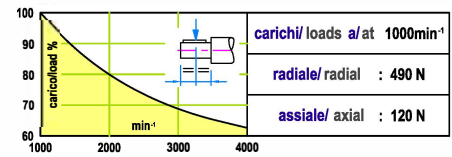
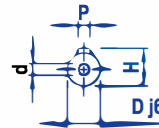
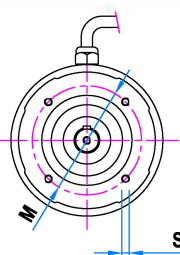
Tipo Type	Potenza Power	Tensione/Corrente Voltage/Current	Velocità Speed	Coppia Torque	Potenza Power	Tensione/Corrente Voltage/Current	Velocità Speed	Coppia Torque	Potenza Power	Tensione/Corrente Voltage/Current	Velocità Speed	Coppia Torque
N805.19	0,55 kW	12 V - 55 A	1500 rpm	3,5 Nm	0,75 kW	12 V - 75 A	2200 rpm	3,3 Nm	1,1 kW	12 V - 110 A	3000 rpm	3,5 Nm
		24 V - 27 A				24 V - 37 A				24 V - 55 A		
N806.19		48 V - 14 A				48 V - 19 A				48 V - 27 A		
N805.27	0,75 kW	12 V - 75 A	1500 rpm	4,8 Nm	1 kW	12 V - 100 A	2000 rpm	4,8 Nm	1,1 kW	12 V - 110 A	3000 rpm	3,5 Nm
		24 V - 37 A				24 V - 50 A				24 V - 75 A		
N806.27		48 V - 19 A				48 V - 25 A			1,5 kW	48 V - 37 A		4,8 Nm
N805.38	1,1 kW	12 V - 110 A	1500 rpm	7 Nm	1,1 kW	12 V - 110 A	2200 rpm	4,8 Nm	---	---	3000 rpm	---
		24 V - 55 A				24 V - 75 A				24 V - 110 A		
N806.38		48 V - 27 A			1,5 kW	48 V - 37 A		6,5 Nm	2,2 kW	48 V - 55 A		7 Nm

Tolleranza / Tolerance ±10%

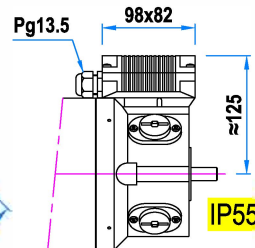
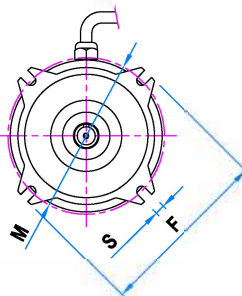
Max. 1,1 kW a / at 12 V Max. 2,2 kW a / at 24 V



80 B14
90 B14



80 B5
90 B5



Morsettiera / Terminal box

Alberi / Shafts

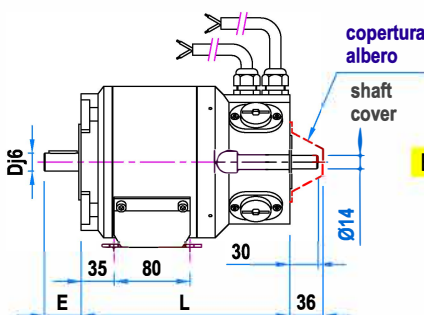
D	E	P	H	d
Ø19	40	6x6x30	21.5	M6
Ø24	50	8x7x35	27	M8

Flange B5 / Flanges B5

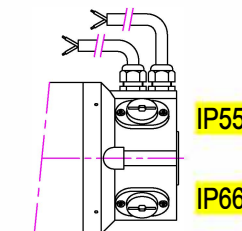
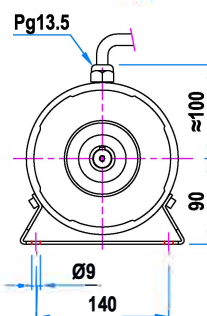
F	N	M	T	S
Ø200	Ø130	Ø165	3	10.5

Flange B14 / Flanges B14

F	N	M	T	S
Ø120	Ø80	Ø100	2.5	M6
Ø140	Ø95	Ø115	3	M8



B3



Uscita cavi / Free cables

Tipo / Type	L	Peso / Weight
N805.19 N806.19	222	12 Kg
N805.27 N806.27	252	15 Kg
N805.38 N806.38	277	18.5 Kg



LSMotion
INDUSTRIE

"La passion du monde de la Mécatronique"

Specifiche soggette a modifiche senza preavviso
Specifications subject to change without notice

Motore V805 IP55 - V806 IP66

Motor V805 IP55 - V806 IP66

S1 SERVIZIO CONTINUO
CONTINUOUS DUTY

0,55-2,2kW

Motori C.C. a norme CEI ed IEC - magnete permanente - 4 poli
D.C. motors CEI and IEC standards - permanent magnet - 4 poles

Alimentazione da batteria - tensione nominale 12/24/48V
Battery supply - rated voltage 12/24/48V

Fattore di forma 1 - isolamento classe F / H - autoventilato
Form factor 1 - insulation F / H class - selfventilated

V805 protezione IP55 - V806 protezione IP66
V805 protection IP55 - V806 protection IP66

V805 uscita cavi o scatola morsetti - V806 solo uscita cavi
V805 free cables or terminal box - V806 only free cables

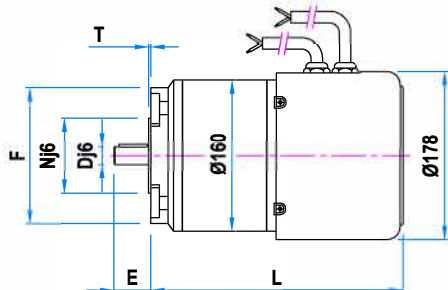


Tipo Type	Potenza Power	Tensione/Corrente Voltage/Current	Velocità Speed	Coppia Torque	Potenza Power	Tensione/Corrente Voltage/Current	Velocità Speed	Coppia Torque	Potenza Power	Tensione/Corrente Voltage/Current	Velocità Speed	Coppia Torque
V805.19	0,55 kW	12 V - 55 A	1500 rpm	3,5 Nm	0,75 kW	12 V - 75 A	2200 rpm	3,3 Nm	1,1 kW	12 V - 110 A	3000 rpm	3,5 Nm
V806.19		24 V - 27 A				24 V - 37 A				24 V - 55 A		
V805.27	0,75 kW	12 V - 75 A	1500 rpm	4,8 Nm	1 kW	12 V - 100 A	2000 rpm	4,8 Nm	1,1 kW	12 V - 110 A	3000 rpm	3,5 Nm
V806.27		24 V - 37 A				24 V - 50 A				24 V - 75 A		
V805.38	1,1 kW	12 V - 110 A	1500 rpm	7 Nm	1,5 kW	12 V - 110 A	2200 rpm	4,8 Nm	---	---	3000 rpm	---
V806.38		24 V - 55 A				24 V - 75 A				24 V - 110 A		

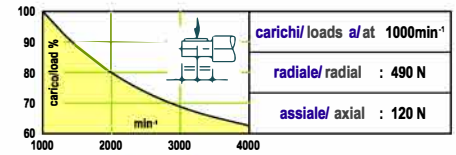
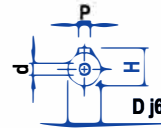
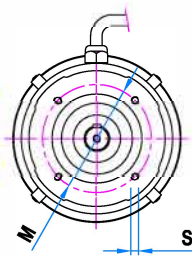
Tolleranza / Tolerance $\pm 10\%$

Max. 1,1 kW a / at 12 V

Max. 2,2 kW a / at 24 V



80 B14
90 B14



Alberi / Shafts

D	E	P	H	d
Ø19	40	6x6x30	21,5	M6
Ø24	50	8x7x35	27	M8

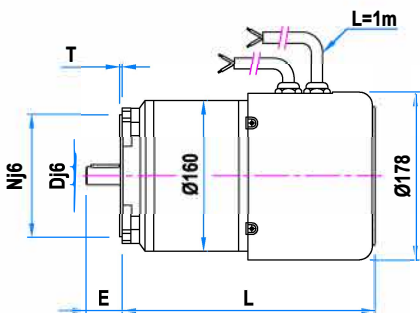
Flange B5 / Flanges B5

F	N	M	T	S
Ø200	Ø130	Ø165	3	10,5

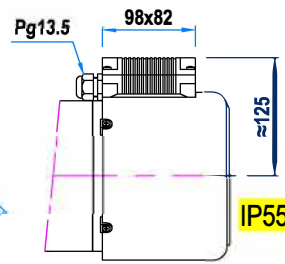
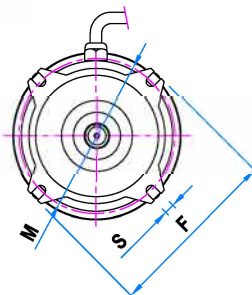
Flange B14 / Flanges B14

F	N	M	T	S
Ø120	Ø80	Ø100	2,5	M6
Ø140	Ø95	Ø115	3	M8

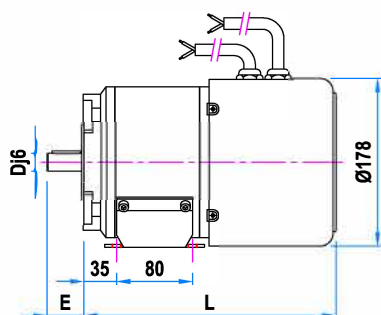
Tipo / Type	L	Peso / Weight
V805.19 V806.19	267	12,5 Kg
V805.27 V806.27	297	15,5 Kg
V805.38 V806.38	322	19 Kg



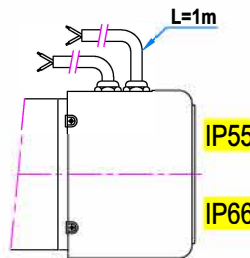
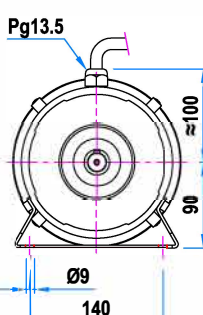
80 B5
90 B5



Morsettiera / Terminal box



B3



Uscita cavi / Free cables



LSMotion
INDUSTRIE

"La passion du monde de la Mécatronique"

Specifiche soggette a modifiche senza preavviso
Specifications subject to change without notice

pag.16

Motore N88 IP54

Motor N88 IP54

S2-S3 SERVIZIO INTERMITTENTE
INTERMITTENT DUTY **1,1-4,4kW**

Motori C.C. a norme CEI ed IEC - magnete permanente - 4 poli
D.C. motors CEI and IEC standards - permanent magnet - 4 poles
Alimentazione da batteria - tensione nominale 12/24/36/48/72/110V
Battery supply - rated voltage 12/24/36/48/72/110V

Fattore di forma 1 - senza ventilazione
Form factor 1 - not ventilated

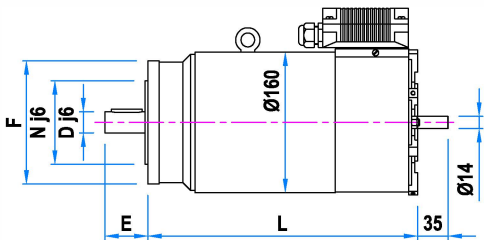
Protezione IP54 - isolamento classe F / H
Protection IP54 - insulation F / H class

Scatola morsetti
Terminal box

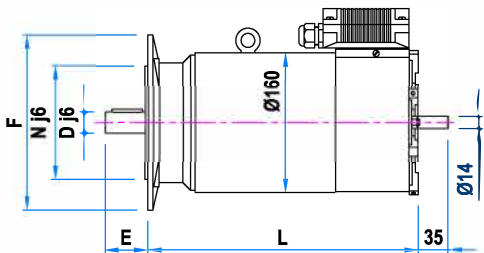
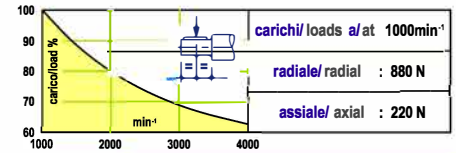
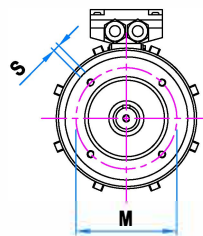


Tipo Type	Potenza Power	Tensione/Corrente Voltage/Current	Velocità Speed	Coppia Torque	Potenza Power	Tensione/Corrente Voltage/Current	Velocità Speed	Coppia Torque	Potenza Power	Tensione/Corrente Voltage/Current	Velocità Speed	Coppia Torque	
N88.38	1,1 kW	12 V - 110 A	1500 rpm	7 Nm	1,1 kW	12 V - 110 A	2200 rpm	4,8 Nm	--	--	--	--	
	1,2 kW	24 V - 60 A		7,6 Nm	1,5 kW	24 V - 75 A		6,5 Nm	2,2 kW	24 V - 110 A	3000 rpm	7 Nm	
		36 V - 40 A		7,6 Nm	1,5 kW	36 V - 50 A		6,5 Nm	2,2 kW	36 V - 74 A	3200 rpm	6,6 Nm	
		48 V - 30 A		7,6 Nm	1,5 kW	48 V - 37 A		6,5 Nm	2,2 kW	48 V - 55 A	3000 rpm	7 Nm	
N88.57	1,1 kW	12 V - 110 A	1500 rpm	7 Nm	--	--	--	--	--	--	--	--	
	1,7 kW	24 V - 85 A		10,8 Nm	2,2 kW	24 V - 110 A	10,7 Nm	2,2 kW	24 V - 110 A	1950 rpm	10,7 Nm	7 Nm	
		36 V - 57 A		10,8 Nm	2,2 kW	36 V - 74 A	10 Nm	3,3 kW	36 V - 110 A	2100 rpm	10 Nm	3000 rpm	10,5 Nm
		48 V - 42 A		10,8 Nm	2,2 kW	48 V - 55 A	10,7 Nm	3,3 kW	48 V - 83 A	1950 rpm	10,7 Nm	1950 rpm	10,5 Nm
N88.81	1,1 kW	12 V - 110 A	1100 rpm	9,6 Nm	--	--	--	--	--	--	--	--	
	2,2 kW	24 V - 110 A	1500 rpm	14 Nm	2,2 kW	24 V - 110 A	2200 rpm	9,6 Nm	--	--	--	--	
		36 V - 74 A		14 Nm	3 kW	36 V - 100 A		13 Nm	3,3 kW	36 V - 110 A	3400 rpm	9,3 Nm	
		48 V - 55 A		14 Nm	3 kW	48 V - 75 A		13 Nm	4,4 kW	48 V - 110 A	3000 rpm	14 Nm	

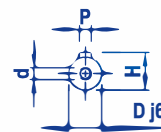
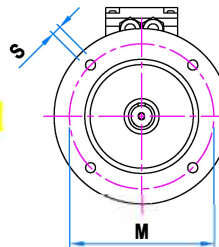
Tolleranza / Tolerance ±10% Max. 1,1 kW a / at 12 V Max. 2,2 kW a / at 24 V Max. 3,3 kW a / at 36 V Max. 4,4 kW a / at 48 V



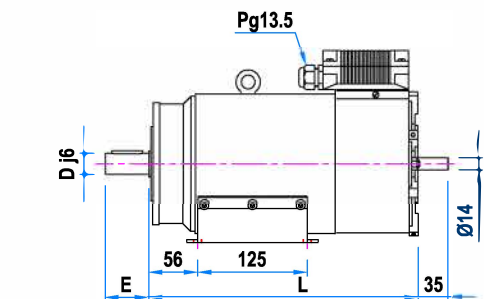
B 14



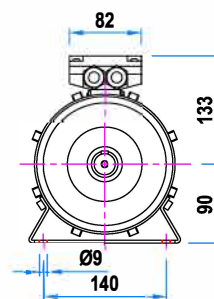
B 5



Alberi / Shafts				
D	E	P	H	d
Ø19	40	6x6x30	21,5	M6
Ø24	50	8x7x35	27	M8



B 3



Flange B5 / Flanges B5				
F	N	M	T	S
Ø200	Ø130	Ø165	3	Ø11

Flange B14 / Flanges B14				
F	N	M	T	S
Ø140	Ø95	Ø115	3	M8

Tipo / Type	L	Peso / Weight
N88.38	309	22 Kg
N88.57	364	29,6 Kg
N88.81	419	37,2 Kg



LSMotion
INDUSTRIE

"La passion du monde de la Mécatronique"

Specifiche soggette a modifiche senza preavviso
Specifications subject to change without notice

Motore V88 IP54

Motor V88 IP54

S1 SERVIZIO CONTINUO
CONTINUOUS DUTY **1,1-4,4kW**

Motori C.C. a norme CEI ed IEC - magnete permanente - 4 poli
D.C. motors CEI and IEC standards - permanent magnet - 4 poles
Alimentazione da batteria - tensione nominale 12/24/36/48/72/110V
Battery supply - rated voltage 12/24/36/48/72/110V

Fattore di forma 1 - autoventilato
Form factor 1 - selfventilated

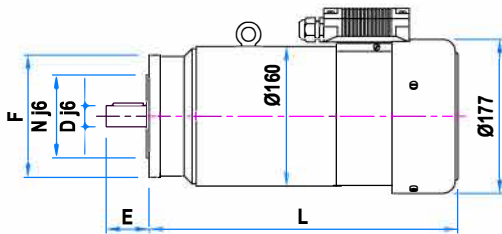
Protezione IP54 - isolamento classe F / H
Protection IP54 - insulation F / H class

Scatola morsetti
Terminal box

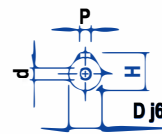
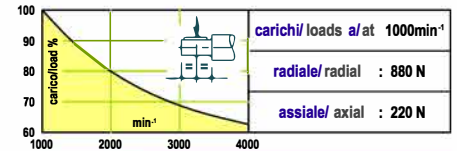
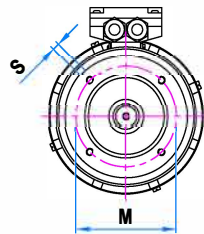


Tipo Type	Potenza Power	Tensione/Corrente Voltage/Current	Velocità Speed	Coppia Torque	Potenza Power	Tensione/Corrente Voltage/Current	Velocità Speed	Coppia Torque	Potenza Power	Tensione/Corrente Voltage/Current	Velocità Speed	Coppia Torque
V88.38	1,1 kW	12 V - 110 A	1500 rpm	7 Nm	1,1 kW	12 V - 110 A	2200 rpm	4,8 Nm	--	--	--	--
	1,2 kW	24 V - 60 A		7,6 Nm	1,5 kW	24 V - 75 A		6,5 Nm	2,2 kW	24 V - 110 A	3000 rpm	7 Nm
		36 V - 40 A				36 V - 50 A			3200 rpm	6,6 Nm		
		48 V - 30 A				48 V - 37 A			3000 rpm	7 Nm		
V88.57	1,1 kW	12 V - 110 A	1500 rpm	7 Nm	--	--	--	--	--	--	--	--
	1,7 kW	24 V - 85 A		10,8 Nm	2,2 kW	24 V - 110 A	1950 rpm	10,7 Nm	2,2 kW	24 V - 110 A	3000 rpm	7 Nm
		36 V - 57 A				36 V - 74 A	2100 rpm	10 Nm	3,3 kW	36 V - 110 A		10,5 Nm
		48 V - 42 A				48 V - 55 A	1950 rpm	10,7 Nm	3,3 kW	48 V - 83 A		10,5 Nm
V88.81	1,1 kW	12 V - 110 A	1100 rpm	9,6 Nm	--	--	--	--	--	--	--	--
	2,2 kW	24 V - 110 A	1500 rpm	14 Nm	2,2 kW	24 V - 110 A	2200 rpm	9,6 Nm	--	--	--	--
		36 V - 74 A				3,3 kW		36 V - 100 A	3400 rpm	9,3 Nm		
		48 V - 55 A						48 V - 75 A	3000 rpm	14 Nm		
2,2 kW	36 V - 74 A	1500 rpm	14 Nm	3 kW	48 V - 75 A	2200 rpm	13 Nm	3,3 kW	36 V - 110 A	3400 rpm	9,3 Nm	
								4,4 kW	48 V - 110 A	3000 rpm	14 Nm	

Tolleranza / Tolerance ±10% Max. 1,1 kW a / at 12 V Max. 2,2 kW a / at 24 V Max. 3,3 kW a / at 36 V Max. 4,4 kW a / at 48 V

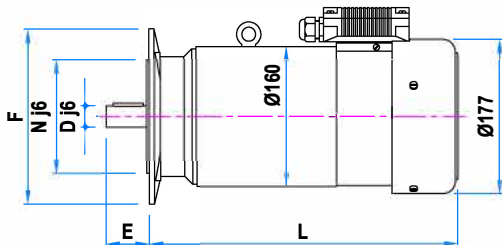


B 14

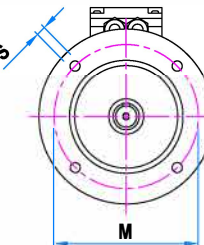


Alberi / Shafts

D	E	P	H	d
Ø19	40	6x6x30	21,5	M6
Ø24	50	8x7x35	27	M8



B 5

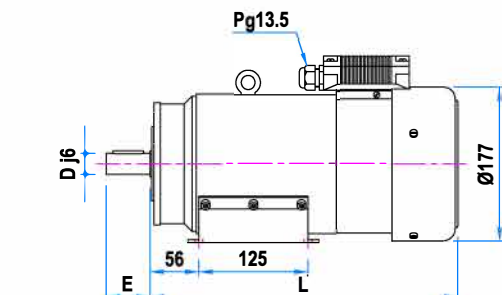


Flange B5 / Flanges B5

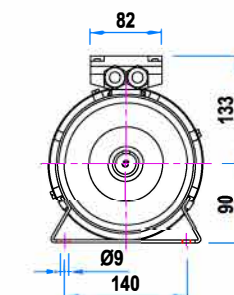
F	N	M	T	S
Ø200	Ø130	Ø165	3	Ø11

Flange B14 / Flanges B14

F	N	M	T	S
Ø140	Ø95	Ø115	3	M8



B 3



Tipo / Type	L	Peso / Weight
V88.38	354	22 Kg
V88.57	409	29,6 Kg
V88.81	464	37,2 Kg



LSMotion
INDUSTRIE

"La passion du monde de la Mécatronique"

Specifiche soggette a modifiche senza preavviso
Specifications subject to change without notice

Motore ME80 - 100 - 112 - 132 IP23

Motor ME80 - 100 - 112 - 132 IP23

S1 SERVIZIO CONTINUO
CONTINUOUS DUTY

0.38-14kW

Motori C.C. a norme CEI ed IEC - eccitazione separata con poli ausiliari
D.C. motors CEI and IEC standards - shunt field with interpoles

Alimentazione da batteria - tensione armatura 12/24/36/48/72/110V
Battery supply - armature voltage 12/24/36/48/72/110V

Autoventilato IC01 protezione IP23 - autoventilato IC411 protezione IP54 o IP55
Selfventilated IC01 protection IP23 - selfventilated IC411 protection IP54 or IP55

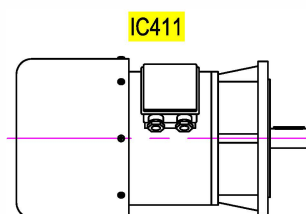
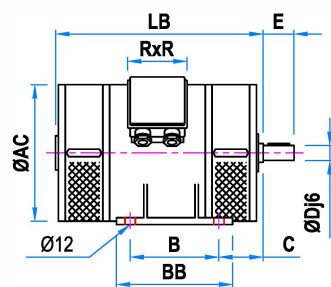
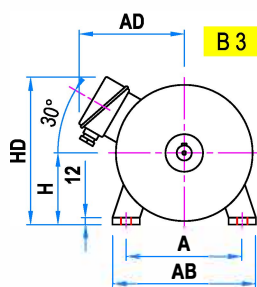
Scatola morsetti o fili uscenti
Terminal box or free wires

Protezione IP54 o IP55 a richiesta
IP54 or IP55 protection on request

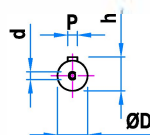
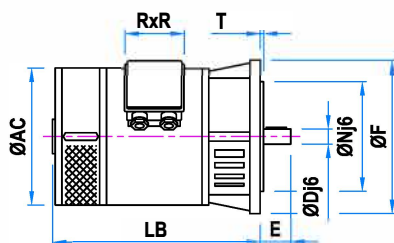
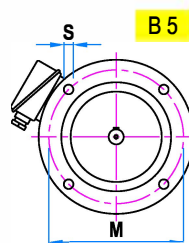


Tipo / Type	ØAC	LB	Peso / Weight	Potenza a / Power at			
				1400 / 1600 rpm	1800 / 2200 rpm	2300 / 2700 rpm	2800 / 3200 rpm
ME80R	157	285	17 kg	0.38 kW	0.5 kW	0.65 kW	0.75 kW
ME80S	157	305	19 kg	0.5 kW	0.7 kW	0.8 kW	1 kW
ME100R	192	310	26 kg	0.65 kW	0.8 kW	1 kW	1.3 kW
ME100S	192	330	31 kg	0.9 kW	1.2 kW	1.5 kW	1.7 kW
ME100T	192	330	33 kg	1.1 kW	1.4 kW	2 kW	2.6 kW
ME112R	220	335	36 kg	1.7 kW	2.2 kW	2.5 kW	3.2 kW
ME112S	220	335	40 kg	2.3 kW	2.7 kW	3.2 kW	4 kW
ME112T	220	375	45 kg	2.5 kW	3.3 kW	4 kW	4.7 kW
ME112L	220	405	51 kg	2.8 kW	3.8 kW	4.5 kW	5.5 kW
ME132R	260	390	66 kg	3.7 kW	5.2 kW	6.2 kW	8 kW
ME132S	260	415	76 kg	4.8 kW	6.4 kW	7 kW	9 kW
ME132T	260	440	86 kg	6 kW	8 kW	9 kW	10 kW
ME132L	260	480	110 kg	8 kW	10 kW	12 kW	14 kW

DATI INDICATIVI. Richiedere dimensionamento in fase di scelta del prodotto/ PROVISIONAL DATA. Contact us for the updates



Tipo Type	Alberi / Shafts				
	D	E	P	H	d
ME80	Ø14	30	5x5x20	16	M5
ME80-100	Ø19	40	6x6x25	21.5	M6
ME100-112	Ø24	50	8x7x35	27	M8
ME112-132	Ø28	60	8x7x40	31	M10
ME132	Ø38	80	10x8x60	41	M12



Tipo Type	Flange B5 / Flanges B5				
	F	N	M	T	S
ME80	Ø160	Ø110	Ø130	3.5	Ø9.5
ME80-100	Ø200	Ø130	Ø165	3.5	Ø11.5
ME112	Ø250	Ø180	Ø215	4	Ø14
ME132	Ø300	Ø230	Ø265	4	Ø14

Tipo / Type	H	C	B	A	AB	BB	HD	AD	R x R
ME80	80	50	100	125	158	138	177	155	100
ME100	100	63	140	160	200	190	205	165	100
ME112	112	70	140	190	235	190	218	180	100
ME132	132	89	178	216	256	215	280	225	125

Tipo Type	Flange ridotte / Short flanges				
	F	N	M	T	S
ME100	Ø192	Ø110	Ø130	3.5	M8
ME112	Ø220	Ø130	Ø165	3.5	Ø11.5
ME132	Ø260	Ø180	Ø215	4	Ø14



LSMotion
INDUSTRIE

"La passion du monde de la Mécatronique"

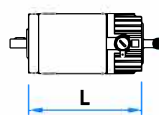
Specifiche soggette a modifiche senza preavviso
Specifications subject to change without notice

Assemblaggio accessori per motori c.c. alimentazione da batteria

Accessories assembly for d.c. motors battery supply

Motore M35
Motor M35

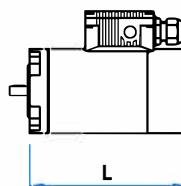
Tipo / Type	L
M35.3	99.5
M35.4	112
M35.6	132
M35.9	163



FRE0.5A1024
EH30FL62

Motore N505
Motor N505

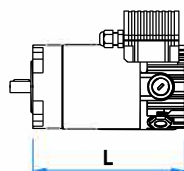
Tipo / Type	L
N505.5	153.5
N505.10	200.5



FRE2.5A1024
EH30FL62

Motore LN56
Motor LN56

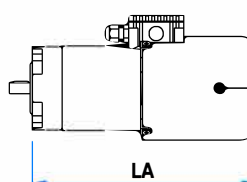
Tipo / Type	L
LN56.5	149
LN56.10	196
LN56.15	241



FRE2.5A1024
EH30FL62

Motore LV56
Motor LV56

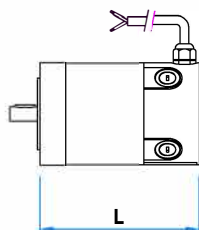
Tipo / Type	LA
LV56.5	219
LV56.10	266
LV56.15	311



FRLAV2A10

Motore LN70 - IP54
Motor LN70 - IP54

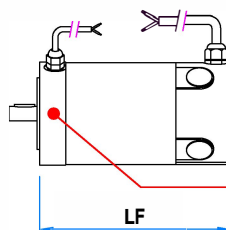
Tipo / Type	L
LN70.5	156.5
LN70.10	206.5
LN70.15	256.5



FRE2.5A1024
FRE4A1024
FRE45A1024
EH30FL62

Motore LN70 - IP66
Motor LN70 - IP66

Tipo / Type	LF
LN70.5	187
LN70.10	237
LN70.15	287

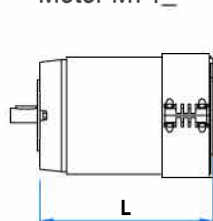


FRI2.5A17

Interno
Inside

Motore M71_
Motor M71_

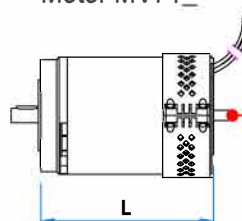
Tipo / Type	L
M71_3	156
M71_5	171
M71_7	186
M71_9	218
M71_13	249



FRE1.5A1024
FRE2.5A1024
FRE4A1024
FRE45A1024
EH30

Motore MV71_
Motor MV71_

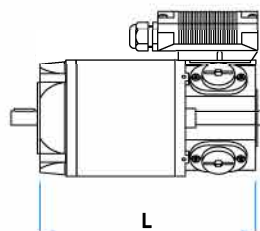
Tipo / Type	L
MV71_3	156
MV71_5	171
MV71_7	186
MV71_9	218
MV71_13	249



FRE1.5A1024
FRE2.5A1024
FRE4A1024
FRE45A1024
EH30

Motore N745
Motor N745

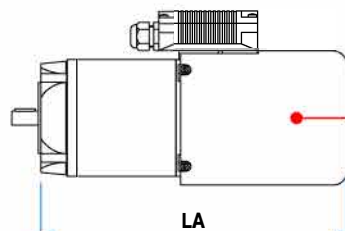
Tipo / Type	L
N745.6	214
N745.9	247
N745.12	277
N745.18	337



FRE4A1424
FRE45A1424
FRE7A1424
FRE8A1424
Encoder a richiesta
Encoder on demand

Motore V745
Motor V745

Tipo / Type	LA
V745.6	303
V745.9	336
V745.12	366
V745.18	426



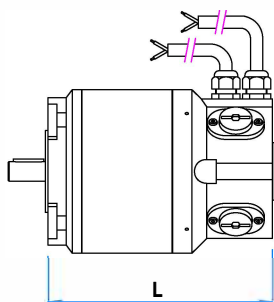
FRE4A1424
FRE45A1424
FRE7A1424
FRE8A1424

Assemblaggio accessori per motori c.c. alimentazione da batteria

Accessories assembly for d.c. motors battery supply

Motore N805
Motor N805

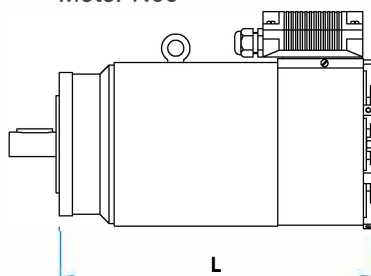
Tipo / Type	L
N805.19	222
N805.27	252
N805.38	277



FRE7A1424
FRE8A1424

Motore N88
Motor N88

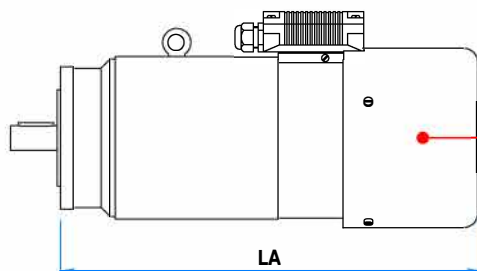
Tipo / Type	L
N88.38	309
N88.57	364
N88.81	419



FRE15A1424
FRE16A1424
Encoder a richiesta
Encoder on demand

Motore V88
Motor V88

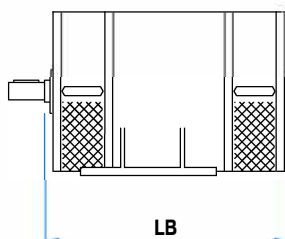
Tipo / Type	LA
V88.38	414
V88.57	469
V88.81	524



FRE15A1424
FRE16A1424

Tipo / Type	LB
ME80R	285
ME80S	305
ME100R	310
ME100S / T	330
ME112R / S	335
ME112T	375
ME112L	405
ME132R	390
ME132S	415
ME132T	440
ME132L	480

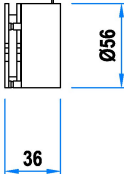
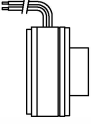
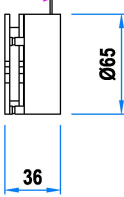
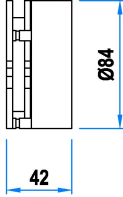
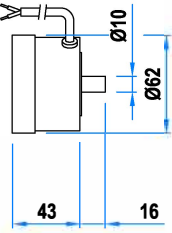
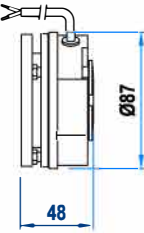
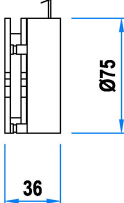
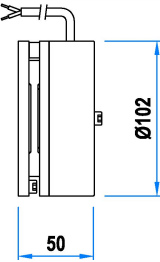
Motore ME
Motor ME



FRE4
FRE45
FRE7
FRE8
FRE15
FRE16
FRE31
FRE32
FRE59
FRE60

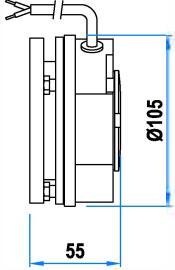
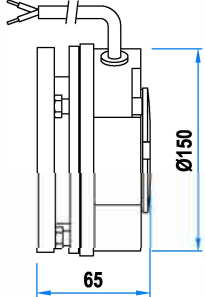
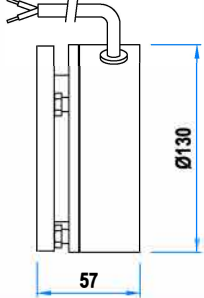
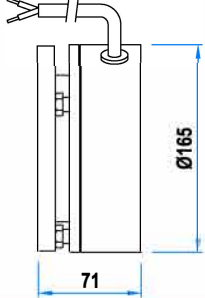
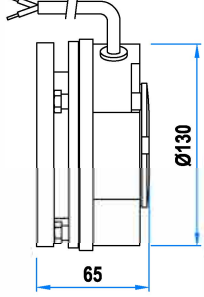
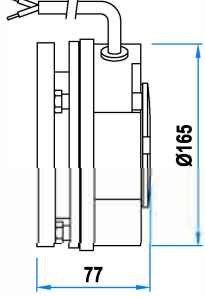
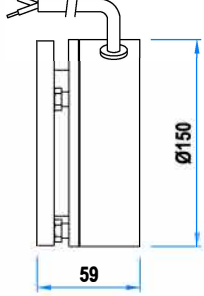
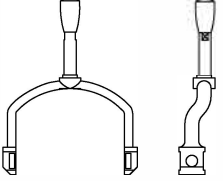
Caratteristiche accessori per motori c.c. alimentazione da batteria

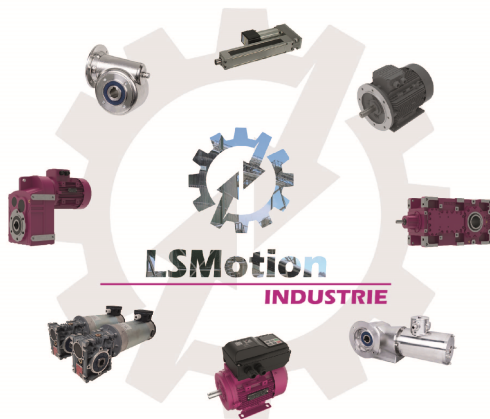
Accessories features for d.c. motors battery supply

<p>FRE0.5A1024 Freno esterno External brake</p> <p>A mancanza di alimentazione With lack of supply</p> <p>Coppia 0.5Nm Torque 0.5Nm</p> <p>Alimentazione 24Vcc - 9W Supply 24Vdc - 9W</p> <p>Peso 0.4 kg Weight 0.4 kg</p> <p>Fili uscenti Free wires</p> 	<p>FRI2.5A17 Freno interno Internal brake</p> <p>A mancanza di alimentazione With lack of supply</p> <p>Coppia 2.5Nm Torque 2.5Nm</p> <p>Alimentazione 24Vcc - 13.5W Supply 24Vdc - 13.5W</p> <p>Peso 0.9 kg Weight 0.9 kg</p> <p>Fili uscenti Free wires</p> 
<p>FRE1.5A1024 Freno esterno External brake</p> <p>A mancanza di alimentazione With lack of supply</p> <p>Coppia 1.5Nm Torque 1.5Nm</p> <p>Alimentazione 24Vcc - 12.5W Supply 24Vdc - 12.5W</p> <p>Peso 0.5 kg Weight 0.5 kg</p> <p>Fili uscenti Free wires</p> 	<p>FRE4A1024 Freno esterno External brake</p> <p>A mancanza di alimentazione With lack of supply</p> <p>Coppia 4Nm Torque 4Nm</p> <p>Alimentazione 24Vcc - 20W Supply 24Vdc - 20W</p> <p>Peso 1.2Kg Weight 1.2Kg</p> <p>Morsettiere motore o fili uscenti Motor terminal box or free wires</p> 
<p>FRLAV2A10 Freno esterno External brake</p> <p>A mancanza di alimentazione With lack of supply</p> <p>Coppia 1.7Nm Torque 1.7Nm</p> <p>Alimentazione 24Vcc - 12W Supply 24Vdc - 12W</p> <p>Peso 0.8 kg Weight 0.8 kg</p> <p>Morsettiere motore Motor terminal box</p> 	<p>FRE45A1424 Freno esterno External brake</p> <p>A mancanza di alimentazione With lack of supply</p> <p>Coppia 4Nm Torque 4Nm</p> <p>Alimentazione 12/48Vcc - 20W Supply 12/48Vdc - 20W</p> <p>Altre tensioni a richiesta Some more voltages on demand</p> <p>Peso 1.2 kg Weight 1.2 kg</p> <p>Morsettiere motore o fili uscenti Motor terminal box or free wires</p> 
<p>FRE2.5A1024 Freno esterno External brake</p> <p>A mancanza di alimentazione With lack of supply</p> <p>Coppia 2Nm Torque 2Nm</p> <p>Alimentazione 24Vcc - 13W Supply 24Vdc - 13W</p> <p>Peso 1.1 kg Weight 1.1 kg</p> <p>Morsettiere motore o fili uscenti Motor terminal box or free wires</p> 	<p>FRE7A1424 Freno esterno External brake</p> <p>A mancanza di alimentazione With lack of supply</p> <p>Coppia 8Nm Torque 8Nm</p> <p>Alimentazione 24Vcc - 25W Supply 24Vdc - 25W</p> <p>Peso 2.3 kg Weight 2.3 kg</p> <p>Morsettiere motore o fili uscenti Motor terminal box or free wires</p> 

Caratteristiche accessori per motori c.c. alimentazione da batteria

Accessories features for d.c. motors battery supply

<p>FRE8A1424 Freno esterno External brake</p> <p>A mancanza di alimentazione With lack of supply</p> <p>Coppia 8Nm Torque 8Nm</p> <p>Alimentazione 12/48Vcc - 25W Supply 12/48Vdc - 25W</p> <p>Altre tensioni a richiesta Some more voltages on demand</p> <p>Peso 2 kg Weight 2 kg</p> <p>Morsettiera motore o fili uscenti Motor terminal box or free wires</p> 	<p>FRE32A1424 Freno esterno External brake</p> <p>A mancanza di alimentazione With lack of supply</p> <p>Coppia 32Nm Torque 32Nm</p> <p>Alimentazione 12/48Vcc - 40W Supply 12/48Vdc - 40W</p> <p>Peso 4.5Kg Weight 4.5Kg</p> <p>Fili uscenti Free wires</p> 
<p>FRE15A1424 Freno esterno External brake</p> <p>A mancanza di alimentazione With lack of supply</p> <p>Coppia 16Nm Torque 16Nm</p> <p>Alimentazione 24Vcc - 30W Supply 24Vdc - 30W</p> <p>Peso 3.1Kg Weight 3.1Kg</p> <p>Morsettiera motore o fili uscenti Motor terminal box or free wires</p> 	<p>FRE59A1424 Freno esterno External brake</p> <p>A mancanza di alimentazione With lack of supply</p> <p>Coppia 60Nm Torque 60Nm</p> <p>Alimentazione 24Vcc - 50W Supply 24Vdc - 50W</p> <p>Peso 6.2Kg Weight 6.2Kg</p> <p>Fili uscenti Free wires</p> 
<p>FRE16A1424 Freno esterno External brake</p> <p>A mancanza di alimentazione With lack of supply</p> <p>Coppia 16Nm Torque 16Nm</p> <p>Alimentazione 12/48Vcc - 30W Supply 12/48Vdc - 30W</p> <p>Peso 3.1Kg Weight 3.1Kg</p> <p>Morsettiera motore o fili uscenti Motor terminal box or free wires</p> 	<p>FRE60A1424 Freno esterno External brake</p> <p>A mancanza di alimentazione With lack of supply</p> <p>Coppia 60Nm Torque 60Nm</p> <p>Alimentazione 12/48Vcc - 50W Supply 12/48Vdc - 50W</p> <p>Peso 6.2Kg Weight 6.2Kg</p> <p>Fili uscenti Free wires</p> 
<p>FRE31A1424 Freno esterno External brake</p> <p>A mancanza di alimentazione With lack of supply</p> <p>Coppia 32Nm Torque 32Nm</p> <p>Alimentazione 24Vcc - 40W Supply 24Vdc - 40W</p> <p>Peso 4.5Kg Weight 4.5Kg</p> <p>Fili uscenti Free wires</p> 	<p>LSBL_ Leva di sblocco manuale Manual release</p> <p>Leva di sblocco manuale a richiesta Manual release on demand</p> <p>Non disponibile per: Not available for: FRE0.5/FRE1.5/FRLAV2</p> 



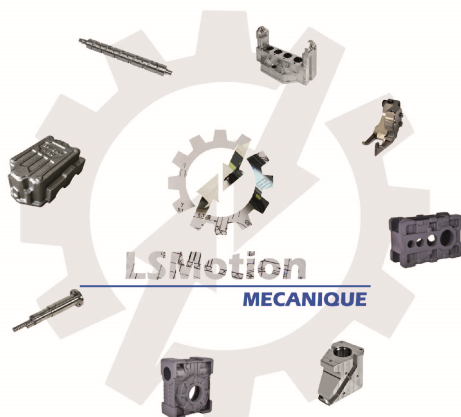
INDUSTRIE

- Réducteur
- Moteur Asynchrone
- Moteur Courant continu
- Motoréducteur
- Vérin électrique
- Module linéaire
- Indexeur
- Variateur
- Cobot



AGRICOLE

- Boitier renvoi d'angle
- Réducteur mélangeuse
- Transmission épandeur
- Multiplicateur



MECANIQUE

- Usinage
- Mécano-soudure
- Chaudronnerie fine
- Fonderie



MOBILE

- Réducteur de roue électrique
- Boitier différentiel
- Moteur flux axial
- Roue électrique
- Pont



LSMotion

“La passion du monde de la Mécatronique”

3 bis Avenue du Stade
77400 Lagny sur Marne

Tel : +33 (0)9 72 19 92 57
Email : contact@lsmotion.fr
www.lsmotion.fr